

How to install Shur-Lok® on boxes with high-lift end gates?

Shur-Co® designed the **Adjustable Offset Bracket** kit to be used on farm bodies that have a high-lift end gate that is wider than the box. This bracket allows the user to space the latchplate and tarp stops out flush with the width of the end gate.

This bracket should be used every two feet or so along the top rail and at each tarp stop. It adjusts from 2 to 3 inches to accommodate a wide variety of gate widths. It bolts on, saving the installer/manufacturer from having to design their own weld-on version. The **Adjustable Offset Bracket** kit is zinc plated to increase corrosion resistance for years of rust-free service.

To determine bracket placement, first measure the width of the gate hinge at the rear of the box. Align brackets with the long side against the box if the hinge is 2 to 2-1/2 inches wide. Align brackets with the short side up against the box if the hinge is 2-1/2 to 3 inches wide. In either case, locate the brackets 3/8 inch from the top of the top rail.

In addition to the **Adjustable Offset Bracket** kit, we offer a **Rear Stabilizer Arm** to secure the fixed tube at the rear of the truck. With no tarp stop to support the tube, it can bend and cause tarp wear issues. Shur-Co® designed this stabilizer arm to be universal, able to fit many different styles of high-lift end gate boxes.

For additional information about Shur-Co® products, give us a call at **1.800.474.8756** Monday through Friday, from 8:00 a.m. to 5:00 p.m. Central Time. Our friendly and knowledgeable Customer Service Representatives will be happy to answer your questions. Or log on to our website at www.shurco.com.



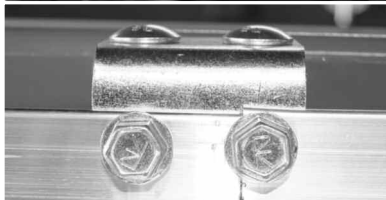
Above: Farm bodies with a high-lift end gate wider than the box (see inset) can be equipped with our Adjustable Offset Bracket kit to flush out the tarp stops and latchplate and our Rear Stabilizer Arm to support the fixed tube.



Here the adjustable bracket is shown positioned with the long side against the box, indicating that the gate hinge (see inset above) on this box measures 2" to 2-1/2" wide.



Side view of same alignment. The adjustable bracket creates space between box, tarp stops and latchplate. Use it wherever a hinge gate interferes with the standard install procedures.



Brackets need only be fastened with a single bolt, except where latchplate sections meet. At those points, brackets should be centered and fastened with two bolts.