



TARPING SYSTEMS & ACCESSORIES

P/N 1115149 Rev. R

# OWNER'S MANUAL



## End Dumps, Belly Dumps & Dump Bodies

*READ BEFORE INSTALLING*

PO BOX 713 ■ 2309 SHUR-LOK STREET ■ YANKTON, SD 57078-0713  
PHONE 1-800-4-SHUR-LOK (1-800-474-8756) ■ FAX 605-665-0501  
[www.shurco.com](http://www.shurco.com)

SHOP ONLINE: [www.shopshurco.com](http://www.shopshurco.com)

**SHIPPING.** Orders are shipped F.O.B. from the Shur-Co<sup>®</sup>, LLC sites listed below. No full freight is allowed or prepaid shipment accepted unless quoted and approved in writing prior to acceptance of the order. All shipments are made by the most reasonable means in accordance with size and weight of order, unless specified routing instructions are furnished by the customer. Shipments are made daily via U.P.S. and common carrier. Claims for shortages must be made within 10 days. All claims for damages or loss in transit must be made with the carrier. No collect calls will be accepted. To ensure delivery of orders, we need your full street address and phone number. When you receive your shipment, examine it carefully. Be sure all cartons listed on the delivery sheet are accounted for. Large items may be packaged separately. If a carton is damaged, open it and inspect the contents before signing for delivery. If merchandise is damaged, describe damage on the delivery receipt. Failure on your part to document damaged or missing merchandise on the delivery receipt releases the carrier of all liability; repair or replacement will be the customer's responsibility.

**WARRANTY.** We warrant all new products are free of defects in materials and workmanship.\* This warranty is effective if products are properly installed and used for the purpose for which they were intended and applies to the original buyer only. Except as set forth above or in any product-specific warranty documentation, we make no other warranties, express or implied, including but not limited to warranties of merchantability of fitness for a particular use.

Returns of a product for warranty must be accompanied by a Return Merchandise Authorization number (RMA#), obtained by calling Customer Service at 866-748-7435, and sent, with freight paid by us, to Shur-Co<sup>®</sup>, LLC, 2309 Shur-Lok St., PO Box 713, Yankton, SD 57078. All products returned without an RMA# will be refused. When we issue the RMA#, we will also issue a call tag to have UPS (or other freight company) pick up the product. C.O.D. returns not accepted. We will pay no storage fees for a warranty product return prior to pick by us or the freight company. If a warranty product return is scheduled to be picked up by us, we will pick up the product at our earliest convenience.

If a product returned is found, in our judgement, to be defective in material or workmanship, our obligation under this warranty is limited to the repair or replacement of the product, which will be made by us. Repair or replacement will be at our discretion, with replacements being made using current products performing in the equivalent function. Labor charges, other than those incurred at our factory, including, but not limited to, any labor to install a repaired or replacement product, are not covered under this warranty. All expenses associated with delivering defective products to our factory and delivering repaired or replacement products from our factory to the owner will be paid by us.

If the product returned is found, in our judgement, to be non-warrantable, the owner will be contacted to authorize repair work, purchase of a replacement product or return of the product, all of which will be at the owner's expense. Payment authorization must be received by us before any non-warrantable product is repaired, replaced or returned. All expenses associated with delivering the repaired non-warrantable product, a replacement product or the non-warrantable product from our factory to the owner will be paid by the owner.

In no event will we be liable for any damages of any kind to person, product or property, including but not limited to indirect, incidental, special, consequential or punitive damages, or damages for loss of profits or revenue, even if we have been advised of the possibility of such damages. There are no warranties for used products or products that have been repaired, altered, modified or subjected to misuse, negligence or accident. We will not repair or replace products that fail or malfunction due to ordinary wear and tear, except as expressly noted in a product-specific warranty. Use of non-Shur-Co<sup>®</sup>, LLC parts in conjunction with Shur-Co<sup>®</sup>, LLC products will void this product warranty.

\*Certain products have specific warranties that differ from this warranty, for example motors and electronics. Product-specific warranty documentation is available for these items. In the event of a conflict between this warranty and a product-specific warranty, the product-specific warranty will govern.

**RETURN POLICY.** All sales final. See WARRANTY above for return details.

**OTHER.** All prices, product listings, sizes, weights and manufacturing details are subject to change without notice. No person is authorized to modify the foregoing conditions of sale whatsoever.

**SHUR-CO<sup>®</sup>, LLC SERVICE AND DISTRIBUTION CENTERS**

*Corporate HQ and Outlet Store*

**SHUR-CO<sup>®</sup> of SOUTH DAKOTA**  
 2309 Shur-Lok St., PO Box 713  
 Yankton, SD 57078-0713  
 Ph 800.474.8756 | Fax 605.665.0501

*ShurTite<sup>™</sup> Service Centers*

**SHUR-CO<sup>®</sup> of CANADA**  
 490 Elgin St., Unit #1  
 Brantford, Ontario N3S 7P8  
 Ph 800.265.0823 | Fax 519.751.3997

**SHUR-CO<sup>®</sup> of SIOUX FALLS**  
 47184 258th St., Suite B  
 Sioux Falls, SD 57107  
 Ph 844.573.9322 | Fax 605.543.5469

**SHUR-CO<sup>®</sup> of ILLINOIS**  
 Ph 866.356.0246 | Fax 217.877.8270

**SHUR-CO<sup>®</sup> of OHIO**  
 Ph 866.356.0242 | Fax 330.297.5599

**SHUR-CO<sup>®</sup> of COLORADO**  
 10220 Brighton Rd., Unit #1  
 Henderson, CO 80640  
 Ph 866.355.9173 | Fax 303.289.2298

**SHUR-CO<sup>®</sup> of FLORIDA**  
 3353 SE Gran Park Way  
 Stuart, FL 34997  
 Ph 800.327.8287 | Fax 772.287.0431

**SHUR-CO<sup>®</sup> of ILLINOIS**  
 3993 E. Mueller Ave.  
 Decatur, IL 62526  
 Ph 866.356.0246 | Fax 217.877.8270

**SHUR-CO<sup>®</sup> of IOWA**  
 3839 Midway Blvd.  
 Ft. Dodge, IA 50501  
 Ph 866.356.0245 | Fax 515.576.5578

**SHUR-CO<sup>®</sup> of MICHIGAN**  
 5100 Lakeshore Dr.  
 Lexington, MI 48450  
 Ph 800.327.8287 | Fax 772.287.0431

**SHUR-CO<sup>®</sup> of NORTH DAKOTA**  
 1746 4th Ave. NW  
 West Fargo, ND 58078  
 Ph 877.868.4488 | Fax 701.277.1283

**SHUR-CO<sup>®</sup> of OHIO**  
 1100 N. Freedom, St. Rt. 88 & 14  
 Ravenna, OH 44266  
 Ph 866.356.0242 | Fax 330.297.5599


**SHUR-CO<sup>®</sup> of TEXAS**  
 34505 I-10 West, S. Frontage Rd.  
 Brookshire, TX 77423  
 Ph 866.689.0039 | Fax 281.934.3311

**SHUR-CO<sup>®</sup> UK, Ltd.**  
 Unit 41 Rochester Airport Estates  
 Laker Rd., Rochester, Kent ME1 3QX  
 Ph +44 (0)1795.473499  
 Fax +44 (0)871.272.8278

*For more info, log on to our website:*  
**www.shurco.com**

**MESSAGE TO OWNERS**

Thank you for buying this tarping system from Shur-Co®. We appreciate your confidence in our products. Please read and thoroughly understand this manual before installing and/or operating this system.

Pay particular attention to important safety and operating instructions, as well as warnings and cautions. The hazard symbol  is used to alert users to potentially hazardous conditions and is followed by caution, warning or danger messages.

Failure to READ AND FOLLOW INSTRUCTIONS could result in failure of your tarping system and/or personal injury. Your trailer requirements may, however, call for minor variations to these instructions.

Please inspect your tarping system periodically. Repair or replace worn or damaged parts to your system.

QUESTIONS? CALL OUR HELP LINE:  
**1-866-748-7435**  
 MON-FRI 8 AM-5 PM CENTRAL TIME

**SAFETY**

We at Shur-Co® are concerned with your safety and the safety of all those operating this system. Therefore, we have provided safety decals at various locations on your tarping system. Keep decals as clean as possible at all times. Replace any decal that has become worn or damaged, painted over or otherwise difficult to read. Replacement decals are available through Shur-Co® dealers.

**TABLE OF CONTENTS**

Hardware Identification..... 1  
 Box Preparation..... 1  
 Tarp & Parts Inspection..... 1  
 Front Drive Assembly - Square Front Trailers..... 2  
 Front Mounting Tube Assembly - Radius Front Trailers..... 3-4  
 Rear Pulley Assembly..... 5  
 Bow & Shank Assembly..... 6  
 Cable & Bow Installation..... 7  
 Cable Tension Adjustment..... 8  
 Tarp Installation..... 8-9  
 Windguard & Anchors..... 10  
 Exploded View..... 11-12  
 Manual Crank & Double Idler Options..... 13  
 Electric Motor Option..... 14-15  
 Heavy-Duty Electric Motor Option..... 16-17  
 Wireless Receiver - Cab Wiring..... 18  
 Wireless Receiver - Trailer Mounting & Wiring..... 19  
 Replacement Parts..... 20-24

**TOOLS REQUIRED**

1. Welder (optional)
2. Hammer
3. Center Punch or Transfer Punch
4. #3 Phillips Insert Bit
5. Air or Electric Impact Wrench (9/16" deep socket)
6. 9/16" Combination Wrench
7. 1/2" Combination Wrench
8. 3/4" Combination Wrench
9. 3/8" Drill
10. 5/16" Drill Bit (for 3/8" self-tapping screws)
11. Grinder
12. Pliers
13. Level
14. 5/16" Magnetic Tip Driver
15. Hack Saw (metal cutter)
16. 1/8" Hex Wrench
17. Vise-Grip Locking Pliers
18. 1 1/8" Combination Wrench
19. 1 1/16" Combination Wrench
20. 3/16" Drill Bit
21. 1/2" Drill Bit

**SAFETY INSTRUCTIONS**

1. Always wear safety glasses during installation and operation.
2. Stay clear of moving parts.
3. Drive with cover open in high wind conditions.
4. No other use of this system is authorized except as designed.

**DRIVE WITH COVER-PRO II® CLOSED TO:**

- Reduce drag
- Improve gas mileage
- Reduce tarp wear and increased tarp life

**RUST PREVENTION**

To prevent rust, paint all exposed metal, such as weld seams and/or metal exposed by grinding or cutting, with corrosion-resistant paint.


 **WARNING**  
 In high wind conditions, drive with tarp system open (at front of trailer) to prevent tarp system from blowing off.

**A**  1704308 - Flanged Cap Screw - #10 x 1/2"


**B**  1701520 - Screw/Rubber Washer


**C**  1701471 - Self-Drilling Screw - #12 x 1"

**D**  1700398 - Self-Drilling Screw - 1/4" x 3/4"


**E**  1703430 - Pan Hd. Cap Screw - 1/4" x 2 1/4"

**F**  1701045 - Cap Screw - 5/16" x 3/4"


**G**  1702926 - Cap Screw - 5/16" x 7/8"


**H**  1701522 - Carriage Bolt - 5/16" x 1"

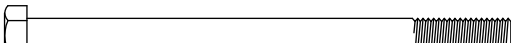
**I**  1701493 - Soc. Hd. Cap Screw - 5/16" x 1 1/2"

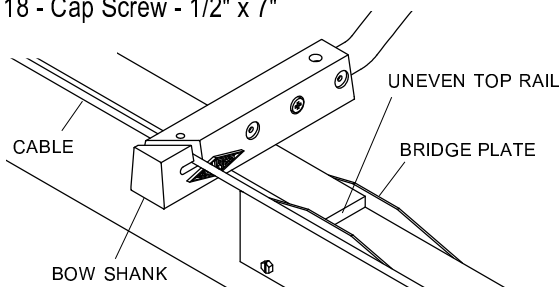
**J**  1701468 - Cap Screw - 5/16" x 1 3/4"

**K**  1700400 - Self-Tapping Screw - 3/8" x 1"


**L**  1701434 - Cap Screw - 3/8" x 1 1/2"

**M**  1702113 - Cap Screw - 1/2" x 5"

**N**  1702118 - Cap Screw - 1/2" x 7"



**O**  1704768 - Self-Drilling Screw - 1/4" x 3/4"


**P**  1700427 - Flat Washer - 1/4"


**Q**  1700433 - Lock Washer - 5/16"

**R**  1201237 - Flat Washer - 5/16"


**S**  1700428 - Flat Washer - 5/16"

**T**  1700434 - Lock Washer - 3/8"

**U**  1701176 - Flat Washer - 3/8"

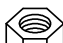
**V**  1700429 - Flat Washer - 3/8"

**W**  1700437 - Lock Washer - 1/2"


**Y**  1702114 - Flat Washer - 1/2"


**Z**  1703969 - Retaining Ring - 1/2"

**AA**  1701543 - Nylon Lock Nut - 1/4"

**BB**  1700411 - Hex Nut - 5/16"

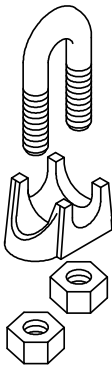
**CC**  1700419 - Nylon Lock Nut - 5/16"

**DD**  1700407 - Hex Nut - 3/8"

**EE**  1700418 - Centerlock Nut - 3/8"

**FF**  1701580 - Nylon Lock Nut - 3/8"

**GG**  1702115 - Nylon Lock Nut - 1/2"

**HH**  1701441 - Cable Clip - 1/4"

**TARP & PARTS INSPECTION**

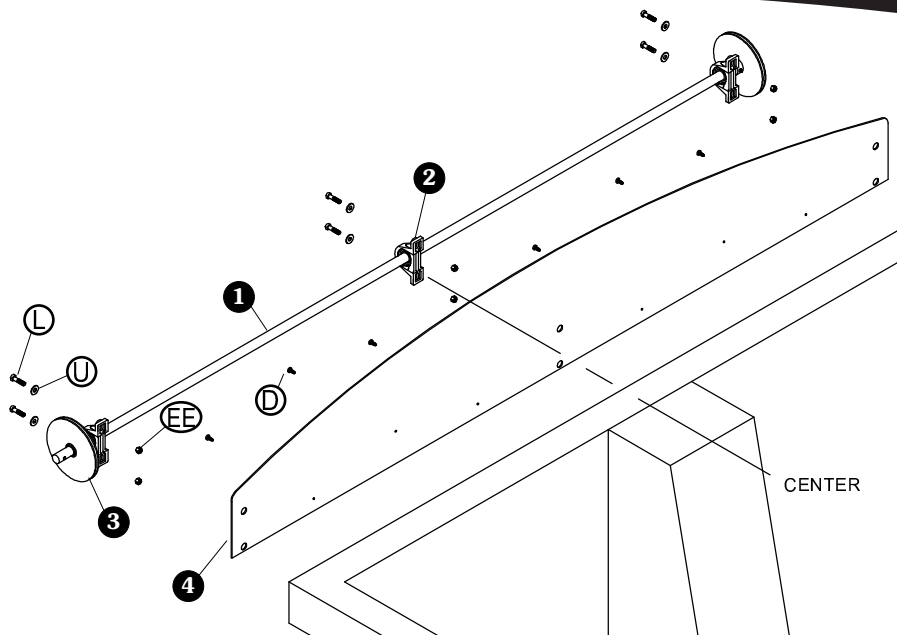
Inspect all parts in Cover-Pro II® kit for damage upon arrival. Measure tarp with slight tension applied and compare to measurement listed on sheet attached to tarp.

**BOX PREPARATION**

Prepare box before installing Cover-Pro II®. Bow shanks slide across top of rails while tarp opens and closes. Remove sharp edges along top rail.

For efficient operation, Cover-Pro II® bows must ride on level surface. Add boards to sides of box if needed, to level side rails.

If top rail is uneven or has gaps, Shur-Co® offers bridge plates to enable bow shanks to ride over these areas. Fasten bridge plates on each side of top rail with screws **O**.



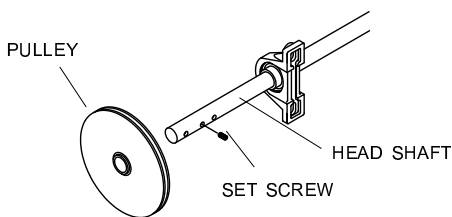
### FRONT OPTIONS

- Drive Assembly w/Windshield
- Drive Assembly w/o Windshield
- Mounting Tube Assembly w/Windshield
- Mounting Tube Assembly w/o Windshield

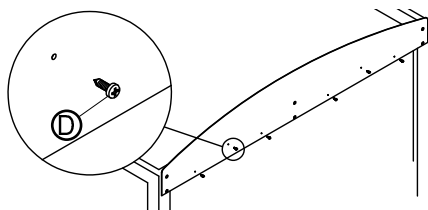
Item	Part #	Description
1.	1109305	Head Shaft - 92"
	1109304	Head Shaft - 96"
	1109303	Head Shaft - 102"
2.	1702095	Pillow Block Bearing
3.	1702096	Pulley - 7"
4.	1110150	Windshield - 92"
	1110151	Windshield - 96"
	1110152	Windshield - 102"
D.	1700398	Self-Drilling Screw - 1/4" x 3/4"
L.	1701434	Cap Screw - 3/8" x 1 1/2"
U.	1701176	Flat Washer - 3/8"
EE.	1700418	Centerlock Nut - 3/8"

**STEP 1:** Slide bearings on to head shaft, locating one in center and one on each end.

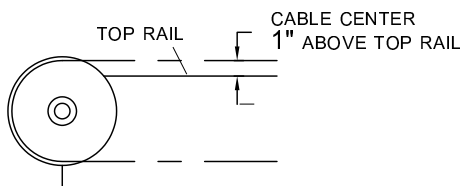
**STEP 2:** Place pulleys on ends of head shaft with hubs facing center. Secure with set screw.



**STEP 3:** **Windshield option.** Center windshield on box and secure with screws **D** before installing drive assembly.

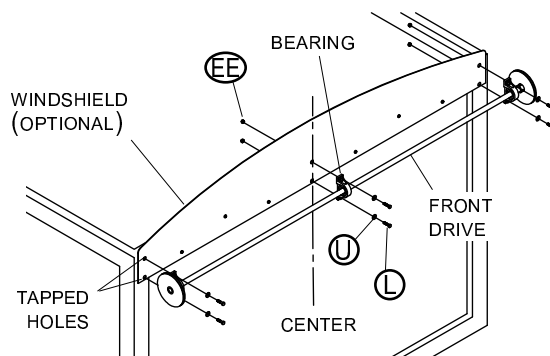


**STEP 4:** Align front drive assembly with front center of box. Adjust vertically so center of cables are 1" above top rails on box. Clamp in place.

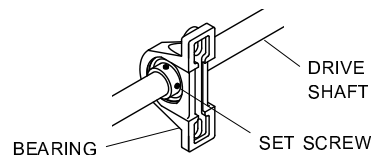


**STEP 5:** Mark and drill 5/16" holes for bearings. Remove assembly. Tap holes with screw **L**.

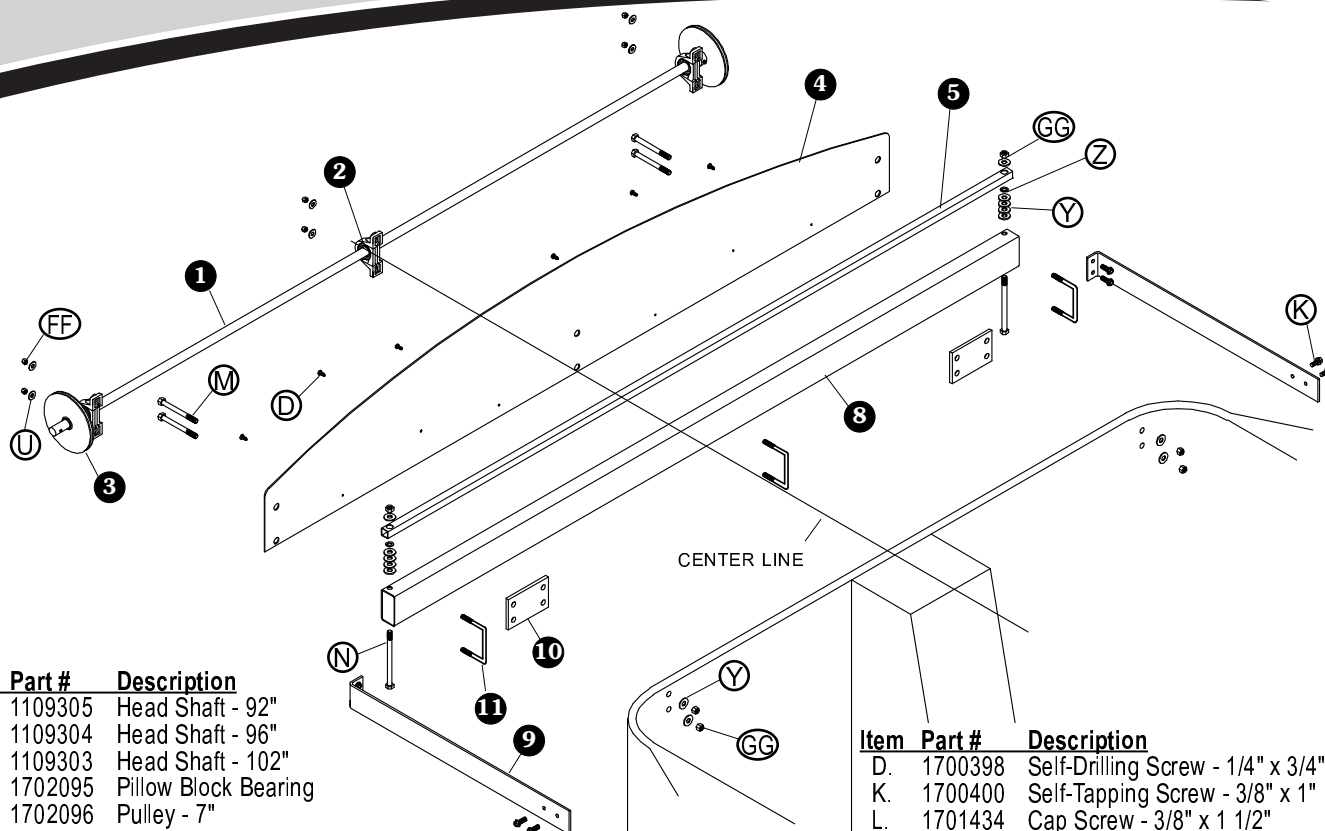
**STEP 6:** Install front drive assembly over tapped holes, secure with screws **L**, washers **U** and nuts **EE**. Do not overtighten.



**STEP 7:** Tighten set screws on bearings.



**NOTE:** Overtightening screws on bearing may crack pillow block housing.



**Item Part # Description**

1.	1109305	Head Shaft - 92"
	1109304	Head Shaft - 96"
	1109303	Head Shaft - 102"
2.	1702095	Pillow Block Bearing
3.	1702096	Pulley - 7"
4.	1110150	Windshield - 92"
	1110151	Windshield - 96"
	1110152	Windshield - 102"
5.	1109296	Tarp Hold-Down Tube - 92"
	1109294	Tarp Hold-Down Tube - 96"
	1109295	Tarp Hold-Down Tube - 102"
6.	1704764	Self-Drilling Screw - 1/4" x 3/4"
7.	1703969	External Retaining Ring - 1/2"

**Item Part # Description**

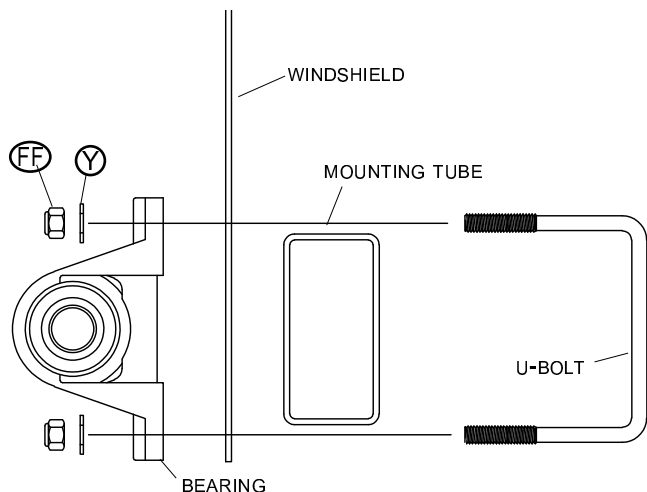
8.	1109307	Mounting Tube - 92"
	1109007	Mounting Tube - 96"
	1109306	Mounting Tube - 102"
9.	1109009	Mounting Tube Brace
10.	1702450	Mounting Tube Spacer
11.	1701532	Square U-Bolt - 3/8"

**Item Part # Description**

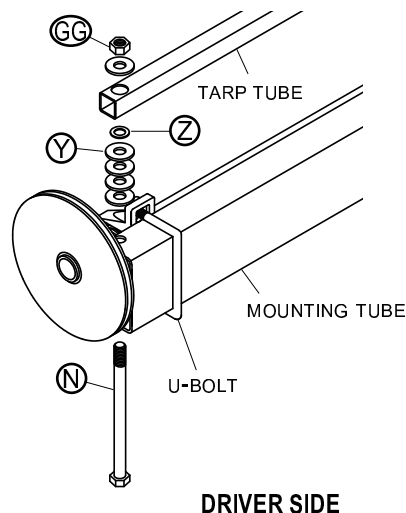
D.	1700398	Self-Drilling Screw - 1/4" x 3/4"
K.	1700400	Self-Tapping Screw - 3/8" x 1"
L.	1701434	Cap Screw - 3/8" x 1 1/2"
M.	1702113	Cap Screw - 1/2" x 5"
N.	1702118	Cap Screw - 1/2" x 7"
U.	1701176	Flat Washer - 3/8"
Y.	1702114	Flat Washer - 1/2"
Z.	1703969	Retaining Ring - 1/2"
EE.	1700418	Centerlock Nut - 3/8"
FF.	1701580	Nylon Lock Nut - 3/8"
GG.	1702115	Nylon Lock Nut - 1/2"

Complete steps 1 to 3 on page 2, then proceed with step 1 below.

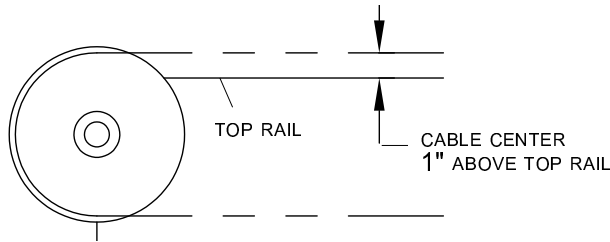
**STEP 1:** Center head shaft with bearings, pulleys and sprocket on mounting tube. Option - place windshield between bearings and mounting tube. Secure with U-bolts, washers **Y** and nuts **FF**.



**STEP 2:** Install tarp tube to top side of mounting tube. Secure with cap screw **N**, washers **Y**, retaining ring **Z** and nut **GG**.



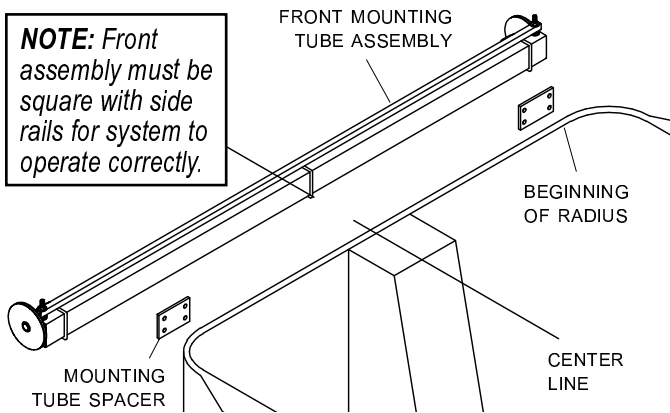
**STEP 3:** Align center of front drive assembly with center of box. Adjust vertically so center of cables are 1" above top rails on box. Clamp in place.



**STEP 4:** Insert plastic mounting tube spacers between front assembly and box. Clamp in place.

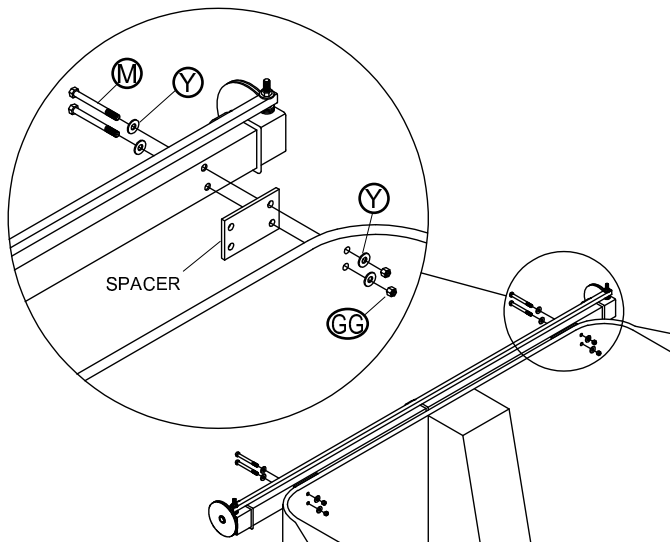
**NOTE:** Locate spacers as close to outside edges of trailer as possible without overlapping corner radii.

**NOTE:** Front assembly must be square with side rails for system to operate correctly.

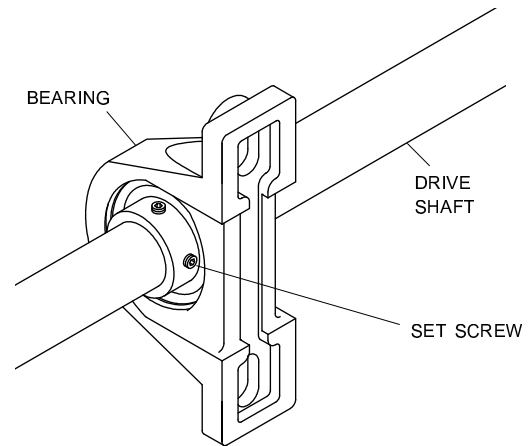


**CAUTION**  
Failure to use mounting tube spacers could result in damage to system.

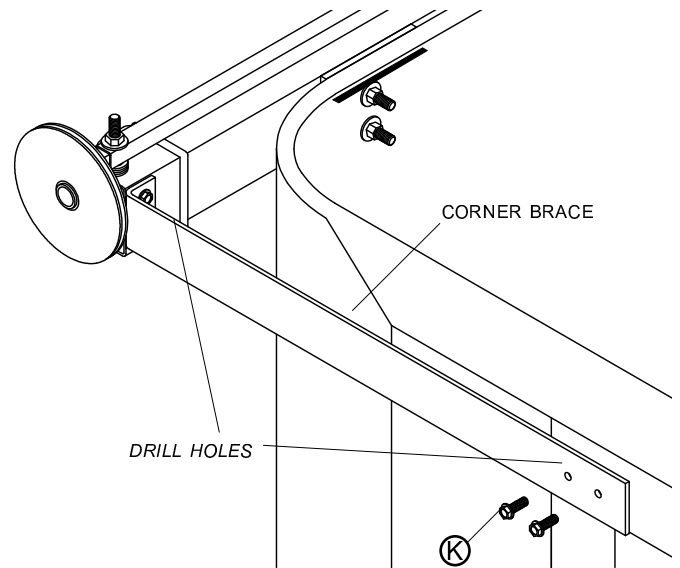
**STEP 5:** Mark and drill 17/32" holes, using spacer as guide. Fasten with cap screws (M), washers (Y) and nuts (GG).



**STEP 6:** Tighten set screws on bearings.

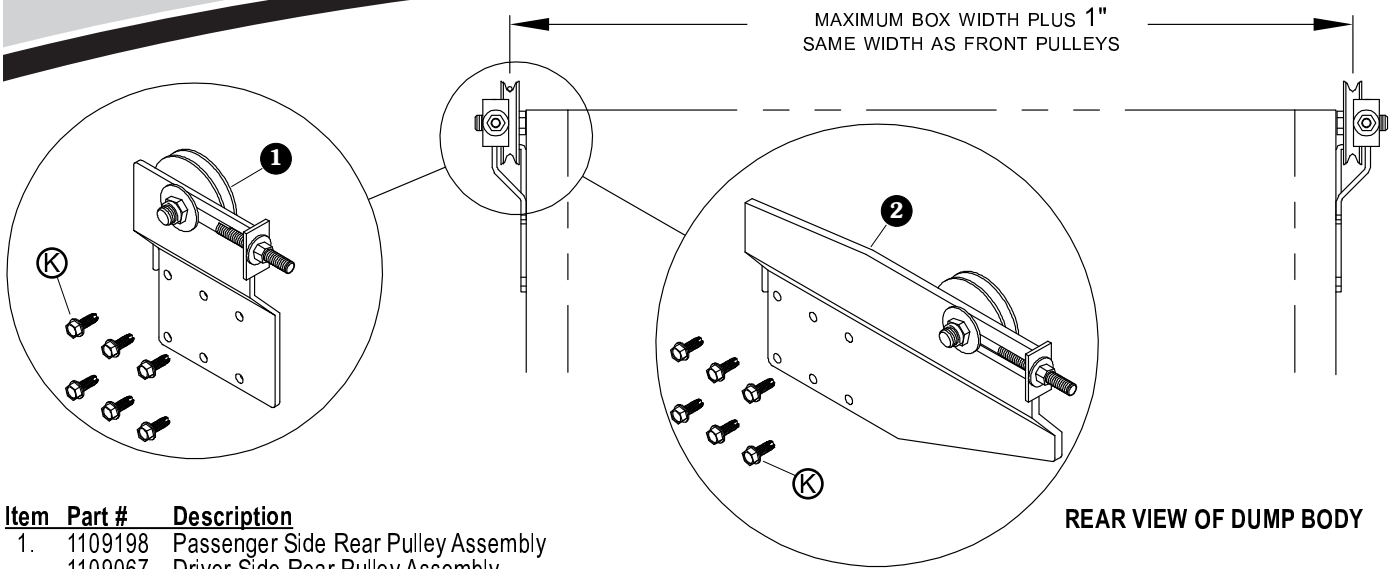


**STEP 7:** **Corner radius of 6" or greater.** Align corner brace against side of box and mounting tube. Level brace with top rail. Clamp in place.



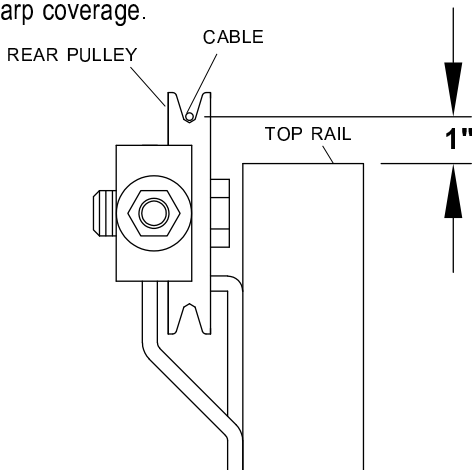
**STEP 8:** Mark and drill 5/16" holes as shown. Secure with screws (K).

**CAUTION**  
Always use corner braces on trailers with rounded corners to prevent front assembly from bending under tension.

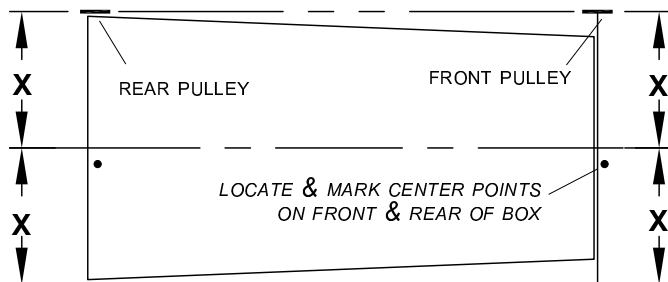


Item	Part #	Description
1.	1109198	Passenger Side Rear Pulley Assembly
	1109067	Driver Side Rear Pulley Assembly
2.	1109200	Passenger Side Extended Rear Pulley Assembly
	1109068	Driver Side Extended Rear Pulley Assembly
K.	1700400	Self-Tapping Screw - 3/8" x 1"

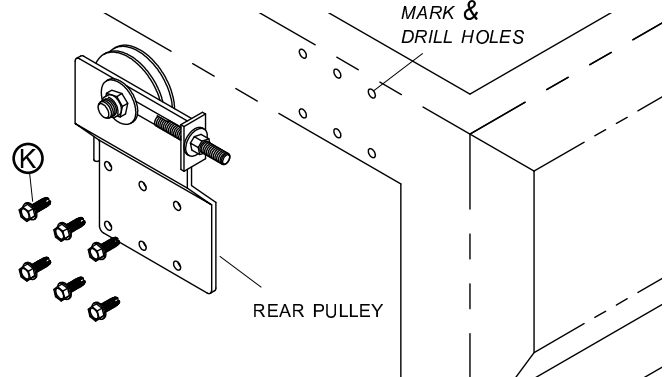
**STEP 1:** Clamp rear pulleys to rear of dump body so center of cable will be 1" above top rail. Position pulleys as far as possible toward rear of dump body for maximum tarp coverage.



**STEP 2:** Locate and mark center points on front and rear of box. Align all four pulleys to be equal distance (distance X) from center points. Place metal shims between brackets and box, if required.

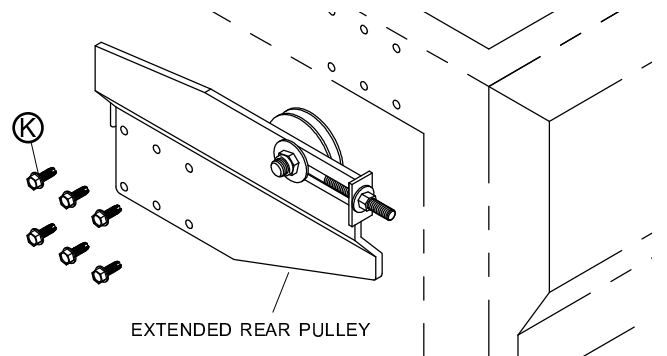


**STEP 3:** Mark and drill 5/16" holes through dump body, using brackets as guide. Fasten brackets to box with screws (K).

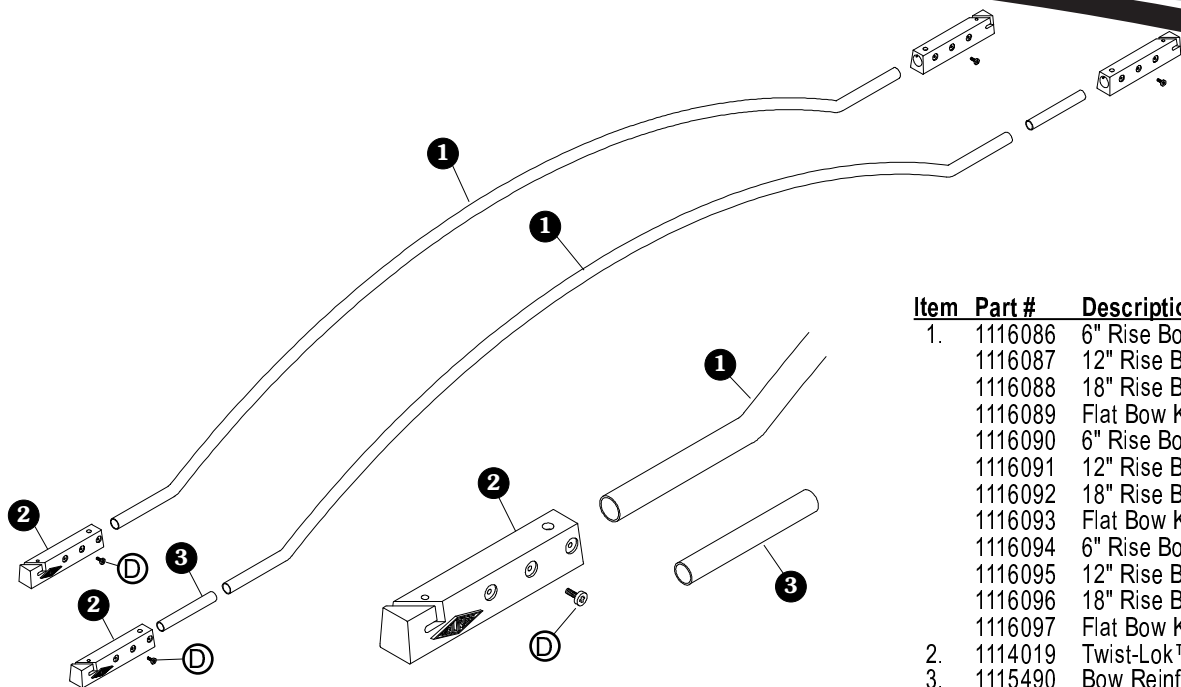


**STEP 4:** Check pulley alignment and spacing.

**NOTE:** Mount extended rear pulleys in same manner as standard rear pulleys.

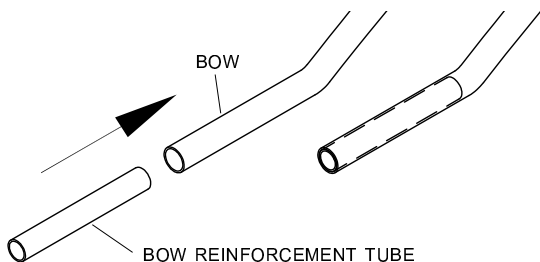




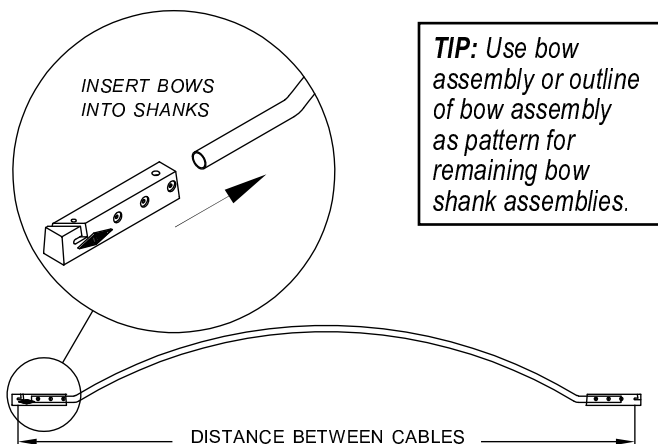


Item	Part #	Description
1.	1116086	6" Rise Bow Kit - 92" Series
	1116087	12" Rise Bow Kit - 92" Series
	1116088	18" Rise Bow Kit - 92" Series
	1116089	Flat Bow Kit - 92" Series
	1116090	6" Rise Bow Kit - 96" Series
	1116091	12" Rise Bow Kit - 96" Series
	1116092	18" Rise Bow Kit - 96" Series
	1116093	Flat Bow Kit - 96" Series
	1116094	6" Rise Bow Kit - 102" Series
	1116095	12" Rise Bow Kit - 102" Series
	1116096	18" Rise Bow Kit - 102" Series
	1116097	Flat Bow Kit - 102" Series
2.	1114019	Twist-Lok™ Bow Shank
3.	1115490	Bow Reinforcement Tube
D.	1700398	Self-Drilling Screw - 1/4" x 3/4"

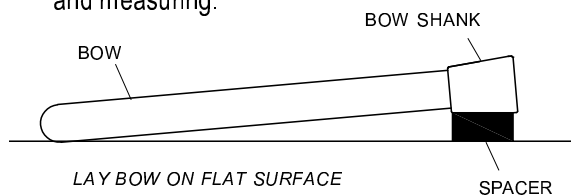
**STEP 1:** For windguard and fixed rear bow assemblies, insert bow reinforcement tube into bow, flush with end of bow.



**STEP 2:** Insert bow ends into shanks. Lay bow and shank assemblies on flat surface, spacing bow shanks equal to distance between cables (maximum box width plus 1").

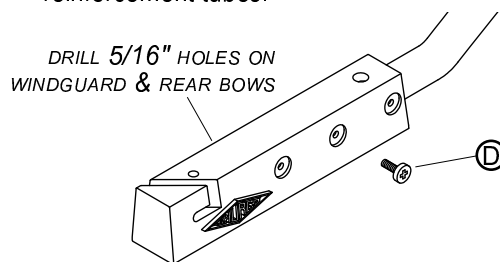


**STEP 3:** Place spacers under each bow shank before fastening bows to shanks to maintain level surface for drilling and measuring.

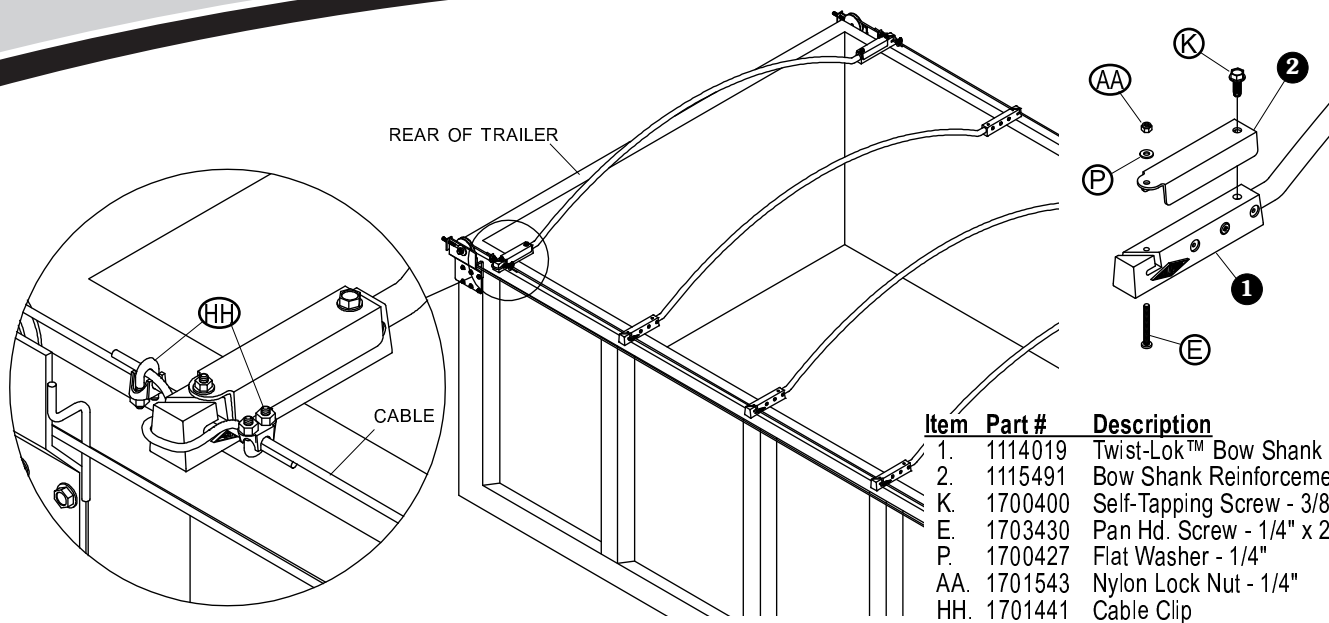


6" RISE BOWS	USE 1/4" SPACER
12" RISE BOWS	USE 3/4" SPACER
18" RISE BOWS	USE 1 1/4" SPACER

**STEP 4:** Center bows between shanks and fasten shanks to bows with screws D. For windguard and fixed rear bows, drill 5/16" holes through bow tubes and reinforcement tubes.

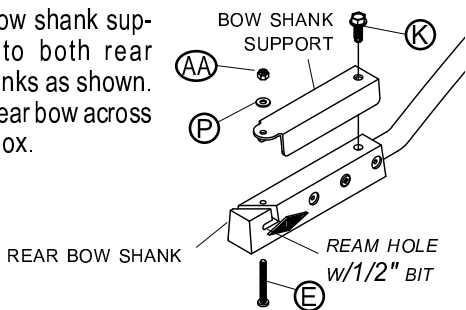


**NOTE:** Make sure all bows are centered between shanks for uniformity, balance and optimum tarp fit. One bow shank will have to be removed from each bow when bows are installed on cables.

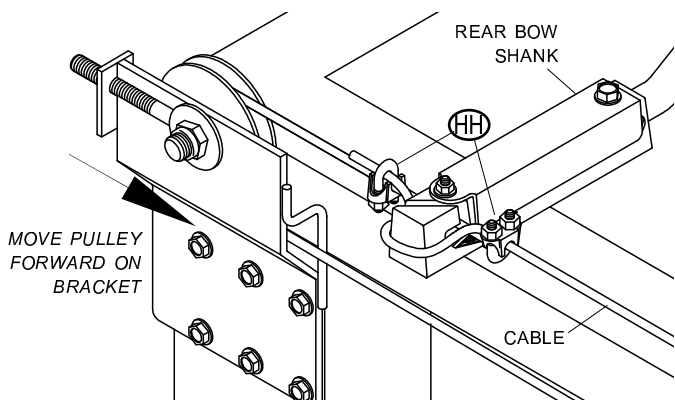


Item	Part #	Description
1.	1114019	Twist-Lok™ Bow Shank
2.	1115491	Bow Shank Reinforcement
K.	1700400	Self-Tapping Screw - 3/8" x 1"
E.	1703430	Pan Hd. Screw - 1/4" x 2 1/4"
P.	1700427	Flat Washer - 1/4"
AA.	1701543	Nylon Lock Nut - 1/4"
HH.	1701441	Cable Clip

**STEP 1:** Install bow shank support onto both rear bow shanks as shown. Center rear bow across rear of box.



**STEP 2:** Move rear pulley to front of bracket. Place cable around front and rear pulleys and tighten cable with vise-grip pliers. Secure with cable clips as shown.

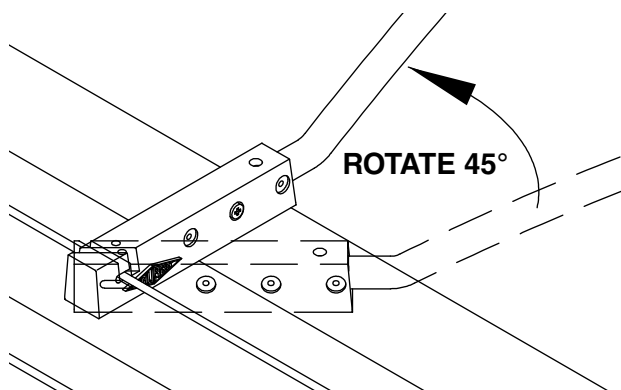


**STEP 3:** Release vise-grip pliers and cut excess cable 1" from cable clips. Cover cable ends with electrical tape.

**STEP 4:** Install cable on opposite side as shown above. Square up rear bow with rear of dump body so tarp will be straight.

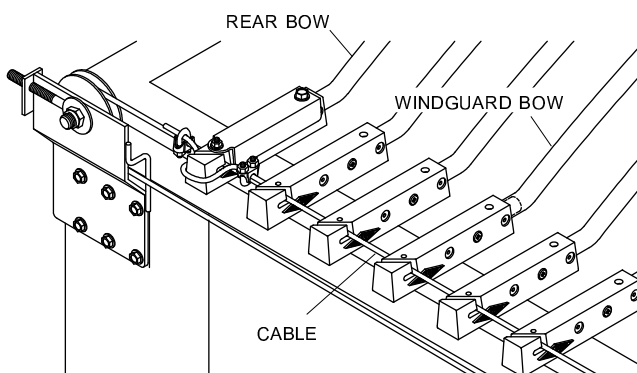
**NOTE:** Evenly space windguard bows with reinforcement tubes along length of box.

**STEP 5:** Position cable over shank groove in bow shank. Rotate shank 45° to secure shank to cable.



**STEP 6:** Remove opposite bow shank and twist shank onto cable. Refasten shank to bow with screw.

**STEP 7:** Install remaining bows, aligning bows with previously installed bow, working towards front of trailer. To maintain consistency, align each bow with previously installed bow.

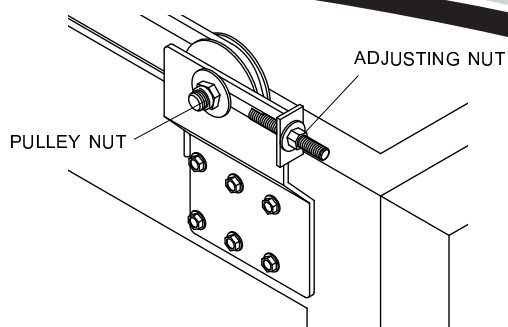


**STEP 1:** Loosen pulley nut on driver side rear pulley 1/2 turn.

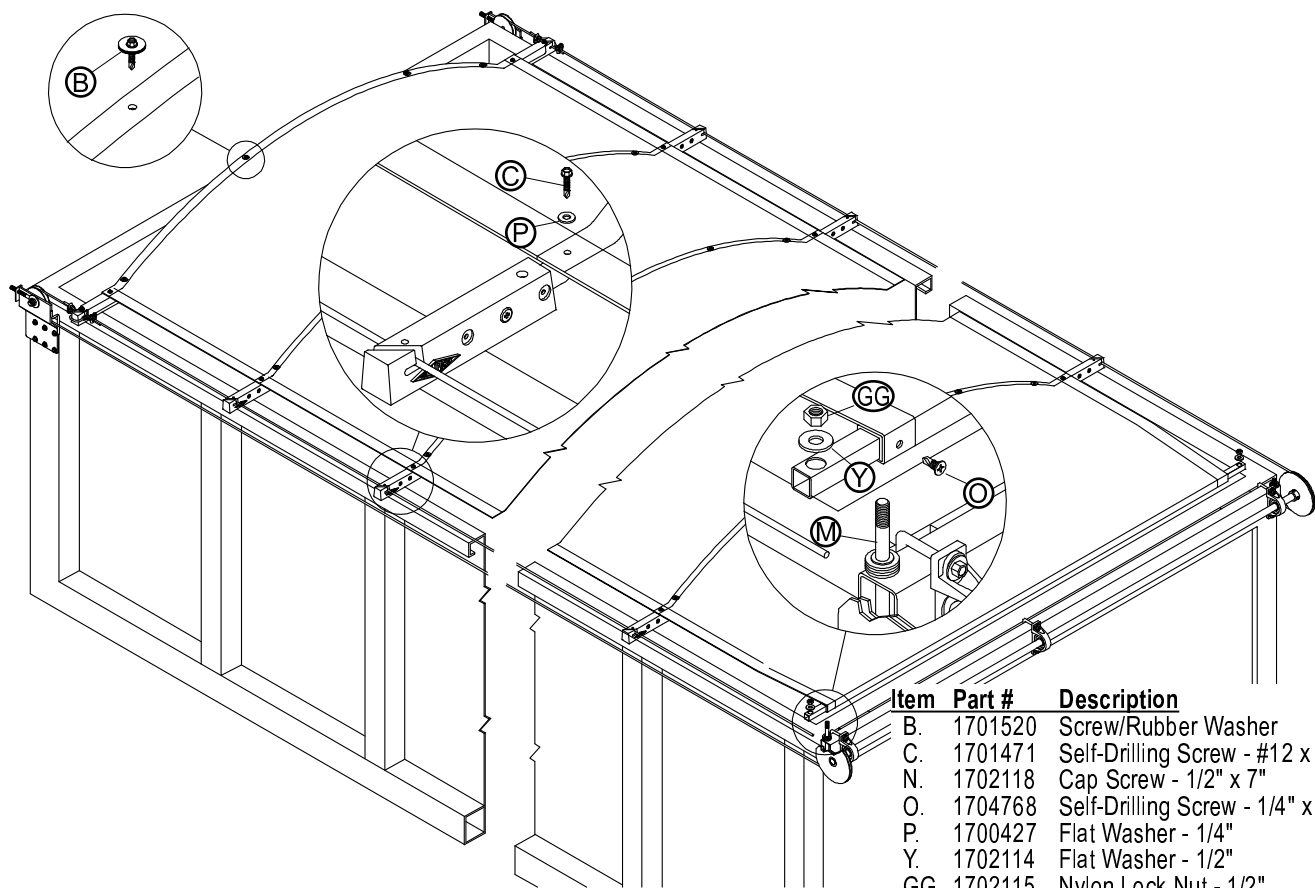
**STEP 2:** Pinch drive cables together 18" in front of rear pulley. Tighten adjusting nut until cables are within 1" of each other. Lock pulley nut. Repeat on passenger side.

**NOTE:** Overtightening cables will damage front assembly.

**NOTE:** Distance from front pulleys to rear pulleys must be equal on both sides of trailer.



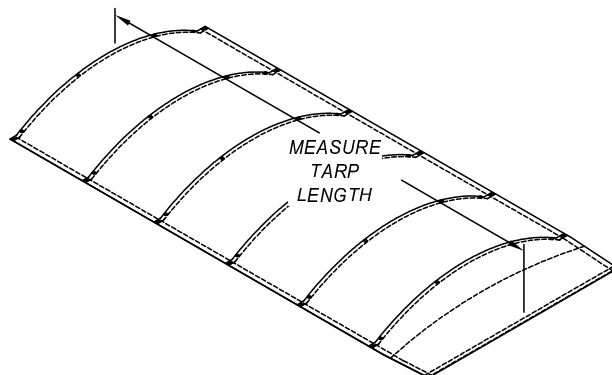
**TARP INSTALLATION**



Item	Part #	Description
B.	1701520	Screw/Rubber Washer
C.	1701471	Self-Drilling Screw - #12 x 1"
N.	1702118	Cap Screw - 1/2" x 7"
O.	1704768	Self-Drilling Screw - 1/4" x 3/4"
P.	1700427	Flat Washer - 1/4"
Y.	1702114	Flat Washer - 1/2"
GG.	1702115	Nylon Lock Nut - 1/2"

**STEP 1:** Measure tarp length while applying tension to tarp. Compare tarp length with tarp length shown on sheet attached to tarp. Do not proceed if tarp length does not match tarp length shown on sheet. Call Shur-Co® or your dealer for replacement information.

**NOTE:** Tarps damaged beyond this point cannot be returned for free replacement. Tarps may be returned and repaired at owner's expense or owner may purchase tarp repair kit.

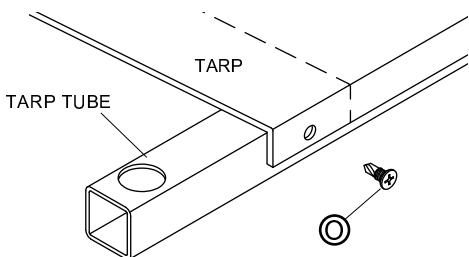


**NOTE:** If not using tarp tube option, attach tarp to front bulkhead (fasteners not supplied).

**STEP 2:** At front of box, remove tarp tube from mounting tube.

**STEP 3:** Space bows about 35" apart across box. Unfold tarp over bows. Center tarp laterally across bows and align rear weld seam on fixed rear bow. Fasten tarp to fixed rear bow as shown in steps 9 and 10A.

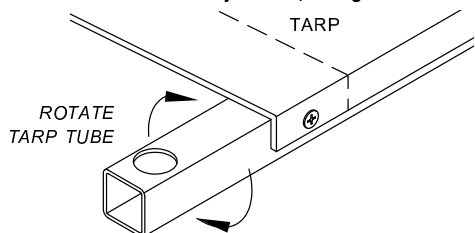
**STEP 4:** Center tarp on tarp tube, aligning center of tarp with center hole on tarp tube. Fasten tarp to tarp tube with screw ①.



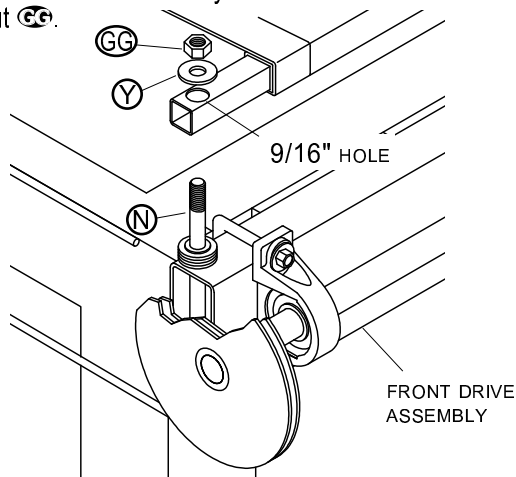
**STEP 5:** Pull tarp tight on both sides, then equally space and fasten remaining rivets along tarp tube.

**STEP 6:** Position rear bow 2" in front of rear pulley.

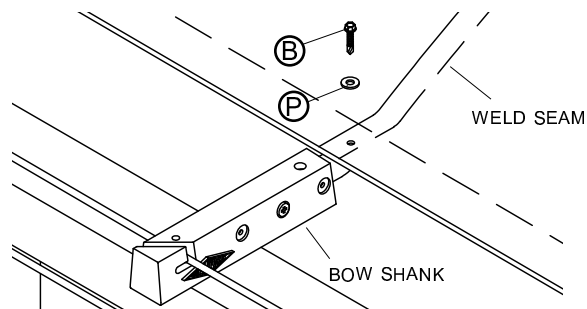
**STEP 7:** Rotate tarp tube toward front of trailer, rolling tarp around tube to adjust tarp length.



**STEP 8:** Stretch tarp tight and slide tarp tube onto screw ① on front drive assembly. Secure with washer ② and nut ③.

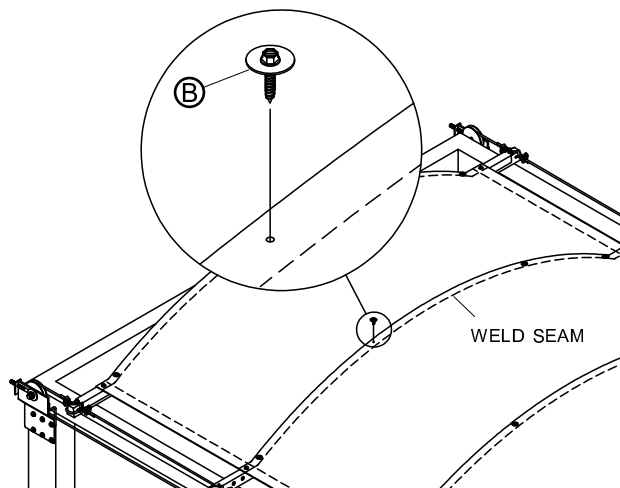


**STEP 9:** Align remaining bows with weld seams in tarp. Secure tarp to bows at bow shanks with screws ④ and washers ⑤.

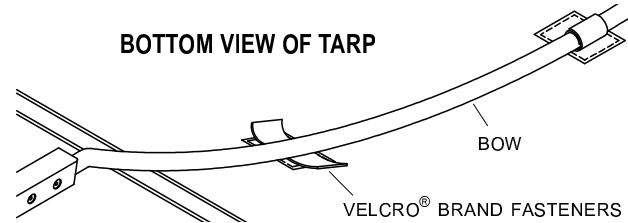


**NOTE:** For standard tarp option, follow step 10a. For Velcro® brand fastener tarp option, follow step 10b.

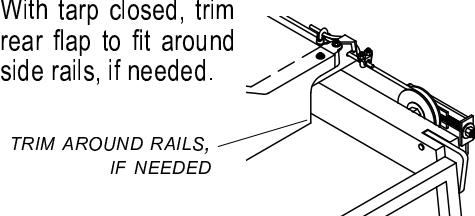
**STEP 10A: Standard tarp.** Fasten tarp to bows, securing screw with washers ⑥ along weld seam at indentations in bows.

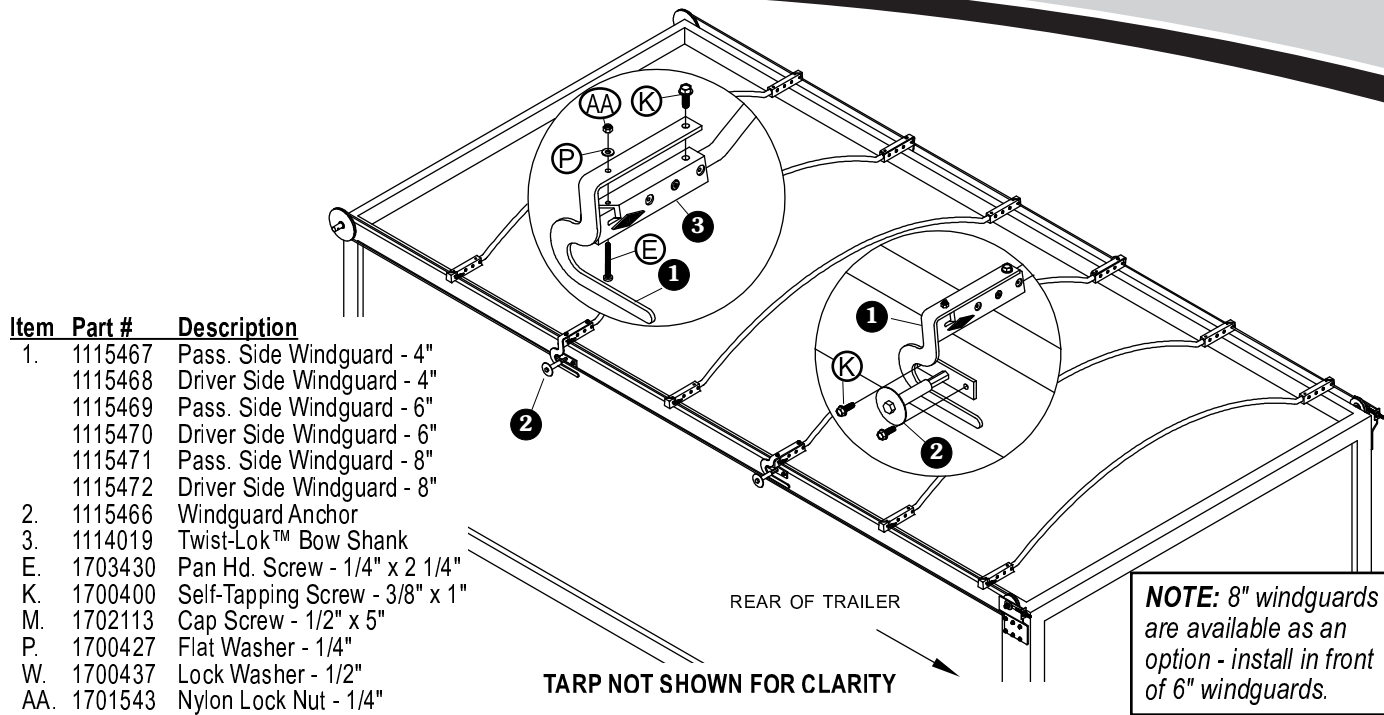


**STEP 10B: Tarp with Velcro® brand fasteners.** Fasten tarp to bows, securing Velcro® brand fasteners around bows.



**STEP 11:** With tarp closed, trim rear flap to fit around side rails, if needed.

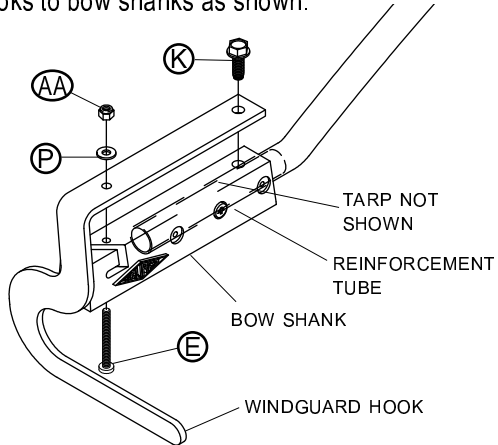




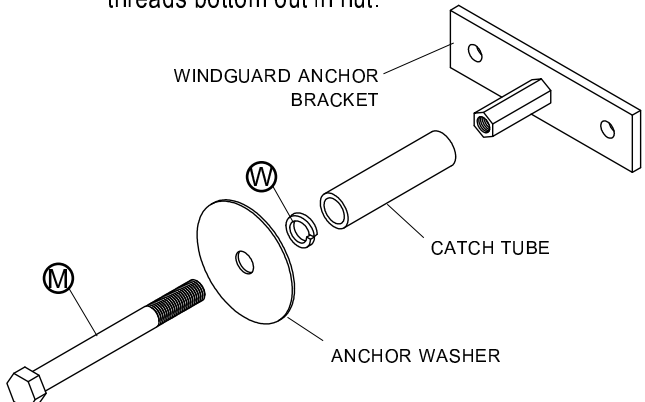
Item	Part #	Description
1.	1115467	Pass. Side Windguard - 4"
	1115468	Driver Side Windguard - 4"
	1115469	Pass. Side Windguard - 6"
	1115470	Driver Side Windguard - 6"
	1115471	Pass. Side Windguard - 8"
	1115472	Driver Side Windguard - 8"
2.	1115466	Windguard Anchor
3.	1114019	Twist-Lok™ Bow Shank
E.	1703430	Pan Hd. Screw - 1/4" x 2 1/4"
K.	1700400	Self-Tapping Screw - 3/8" x 1"
M.	1702113	Cap Screw - 1/2" x 5"
P.	1700427	Flat Washer - 1/4"
W.	1700437	Lock Washer - 1/2"
AA.	1701543	Nylon Lock Nut - 1/4"

**NOTE:** 8" windguards are available as an option - install in front of 6" windguards.

**STEP 1:** Evenly space windguard hooks along box length, positioning longer hooks toward front of box. Secure hooks to bow shanks as shown.

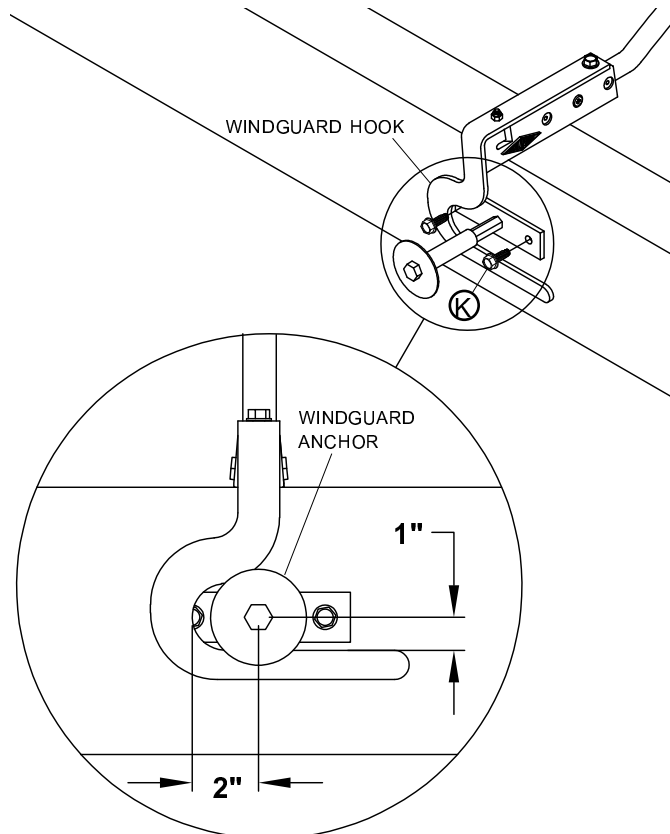


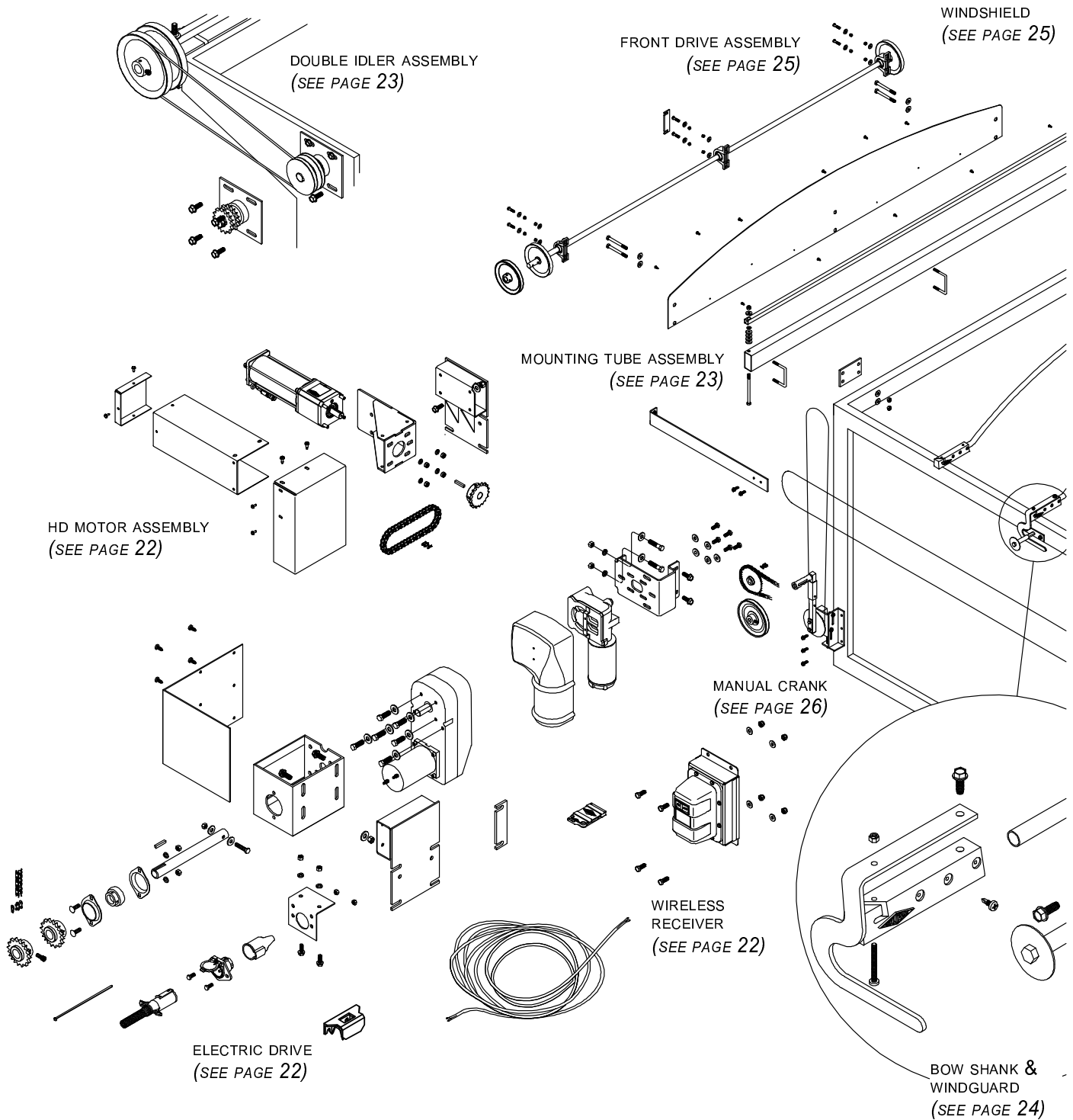
**STEP 2:** Assemble windguard anchors. Tighten screw until threads bottom out in nut.

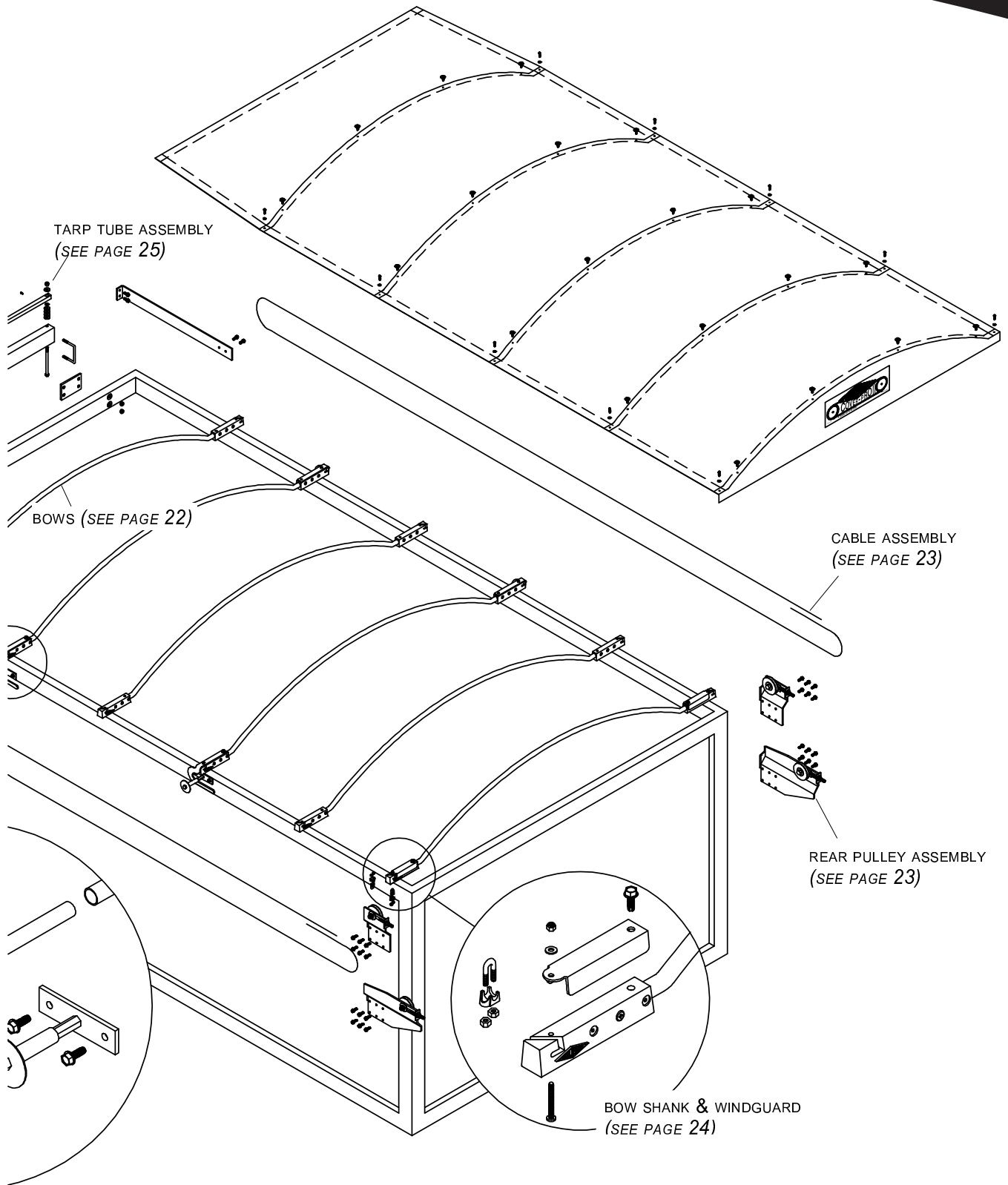


**STEP 3:** Stretch tarp tight along entire length of box and secure with crank assembly latch.

**STEP 4:** Install anchor assemblies at windguard locations. Drill 5/16" holes and fasten to box as shown.

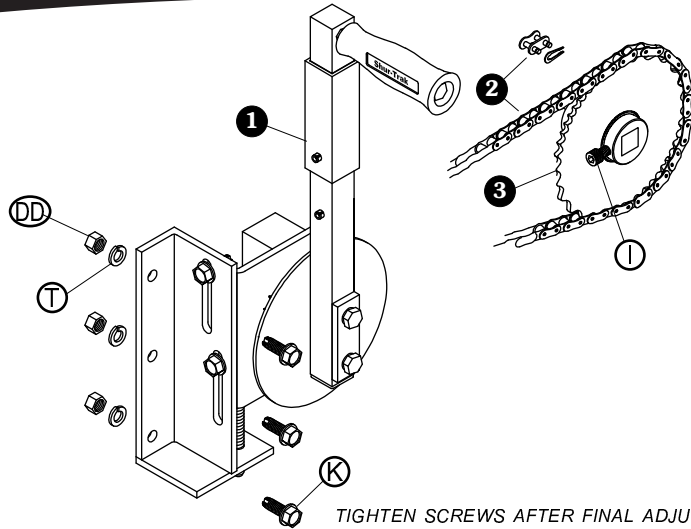






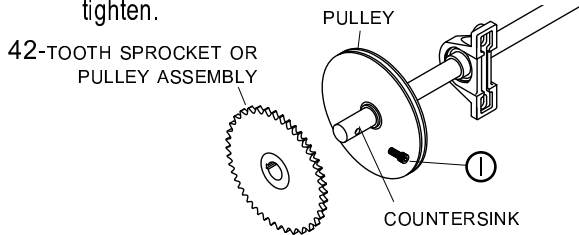


Item	Part #	Description
1.	1108939	Manual Crank Assembly - Chain Drive
2.	1109179	Roller Chain/Link - 14'
3.	1702098	Sprocket - 42-Tooth
I.	1701493	Socket Hd. Cap Screw - 5/16" x 1 1/2"
K.	1700400	Self-Tapping Screw - 3/8" x 1"
T.	1700434	Lock Washer - 3/8"
DD.	1700407	Hex Nut - 3/8"



## MANUAL CRANK

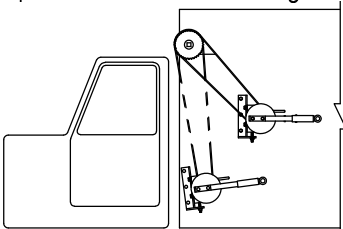
**STEP 1:** Install pulley or sprocket on driver side of head shaft outside of pulley. Loosen screw ③ from sprocket or pulley. Align screw with countersink in head shaft and tighten.



**NOTE:** Sprocket may be mounted to inside of pulley on some trailers, allowing crank to be located closer to trailer.

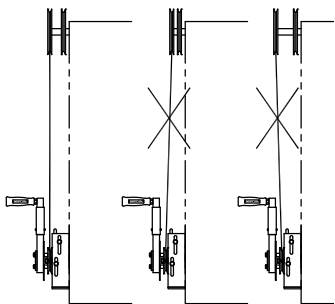
**STEP 2:** Wrap chain around sprocket and let chain hang.

**STEP 3:** Locate crank on truck where crank will not interfere with tarp operation.



**STEP 4:** Mark and drill 5/16" holes. Fasten manual crank to box loosely with screws ④.

**STEP 5:** Install chain and connector link. Align chain vertically and tighten chain and screws.

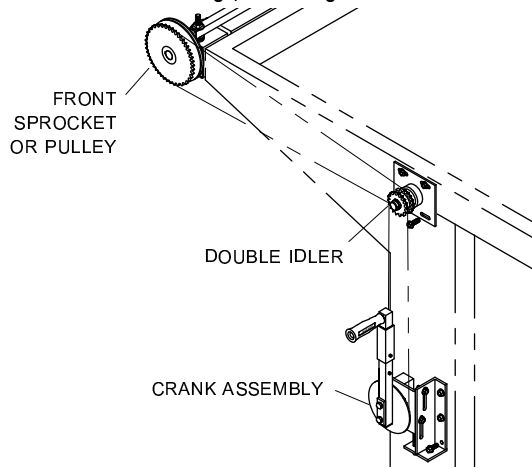


## DOUBLE IDLER

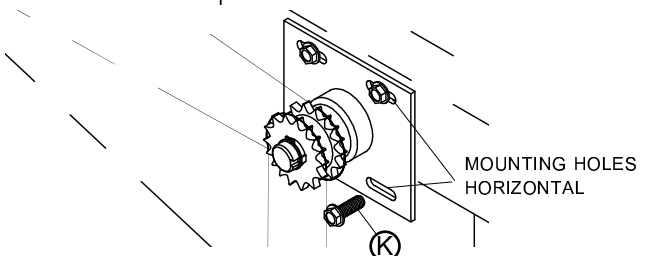
**STEP 6:** Double idler relocates chain/belt away from cab door - for dump bodies with cab shields.

**A:** Wrap one end of belt/chain around front sprocket or pulley. Wrap other end around pulley or sprocket on double idler.

**B:** Position double idler to create slight tension on chain or belt. Mark and drill 5/16" holes on trailer, using slots in mounting plate as guide.

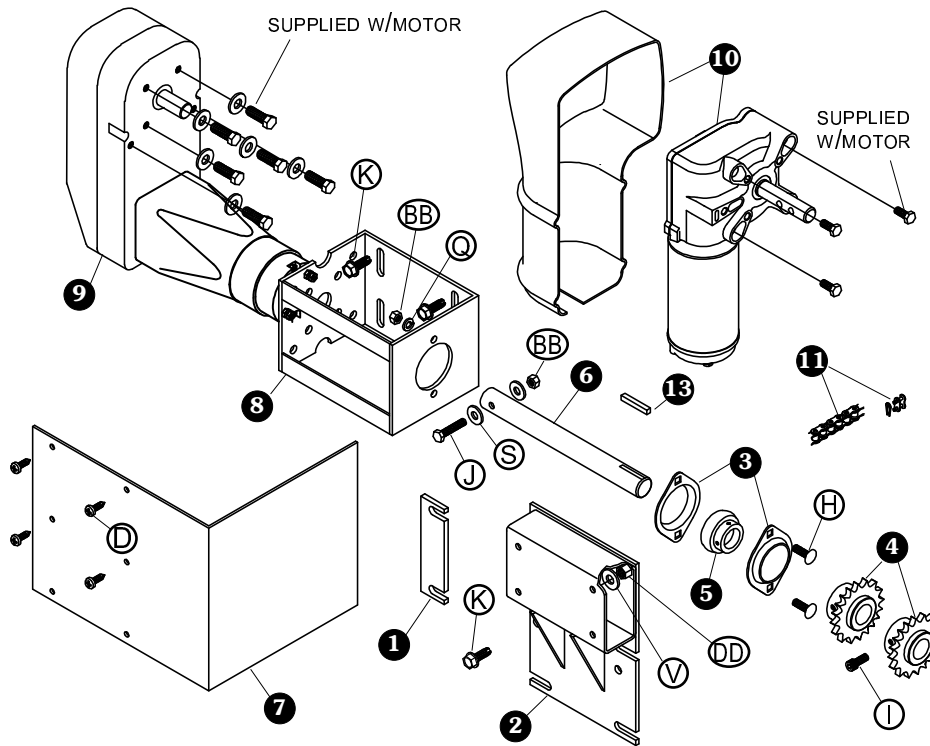


**STEP 7:** Reposition double idler on side of trailer and fasten with screws ④. Make sure mounting holes are horizontal to top rail as shown.



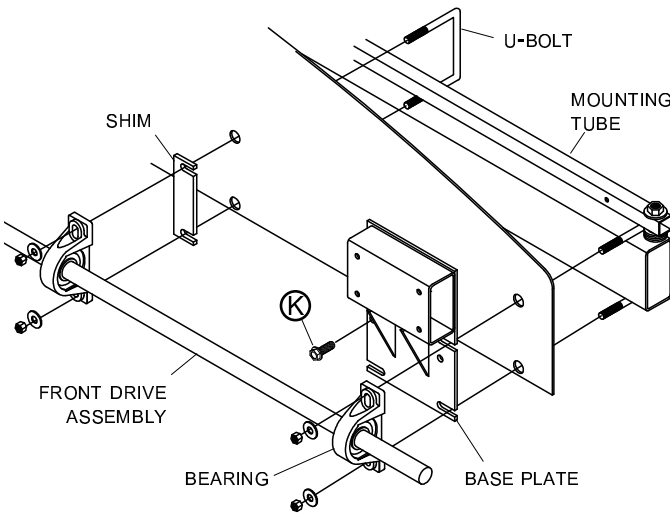
**STEP 8:** Tighten screws ④ while placing tension on chain or belt.





Item	Part #	Description
1.	1109444	Motor Mount Shim
2.	1109449	Motor Mount Base Plate
3.	1701054	Bearing Flange
4.	1106619	Sprocket - 18 Tooth
5.	1705450	Ball Bearing - 1"
6.	1109445	Motor Mount Shaft
7.	1109443	Motor Mount Cover Plate
8.	1109452	Motor Mount
9.	1701498	Super-Duty Electric Motor
10.	1704878	Durabuilt Motor W/Cover - 3 1/8" Shaft
11.	1109456	Roller Chain/Link - 22 3/4"
12.	1701057	Connector Link
13.	1701056	Square Key
D.	1700398	Self-Drilling Screw - 1/4" x 3/4"
H.	1701522	Carriage Bolt - 5/16" x 1"
I.	1701493	Socket Hd. Cap Screw - 5/16" x 1 1/2"
J.	1701468	Cap Screw - 5/16" x 1 3/4"
K.	1700400	Self-Tapping Screw - 3/8" x 1"
Q.	1700433	Lock Washer - 5/16"
S.	1700428	Flat Washer - 5/16"
V.	1700429	Flat Washer - 3/8"
BB.	1700411	Hex Nut - 5/16"
DD.	1700407	Hex Nut - 3/8"

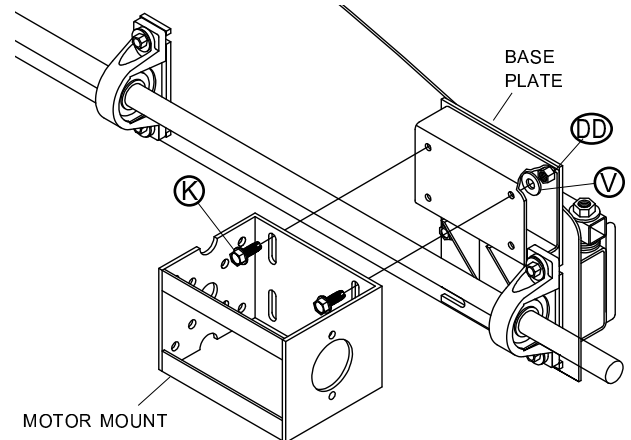
**STEP 1:** Loosen front drive assembly and slide base plate behind driver side bearing. Square up mount and retighten front drive assembly.



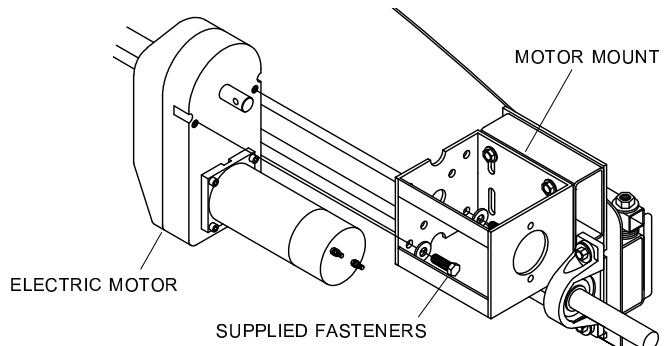
**STEP 2:** Install screw **K** through hole in base plate.

**STEP 3:** Install and secure motor mount shims behind center and passenger side bearings.

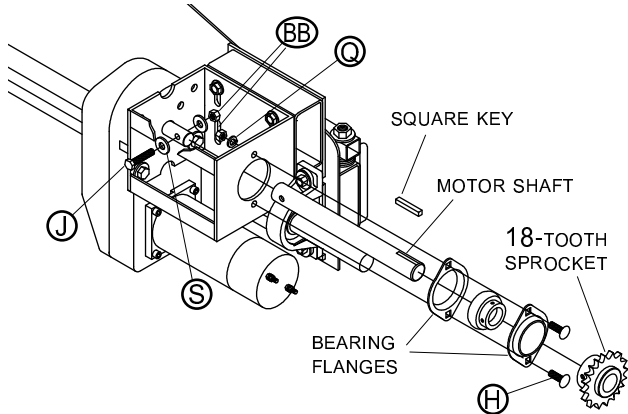
**STEP 4:** Fasten motor mount to base plate with screws **K**, washers **V** and nuts **DD**. Finger tighten.



**STEP 5:** Fasten electric motor to motor mount with six supplied screws and washers.



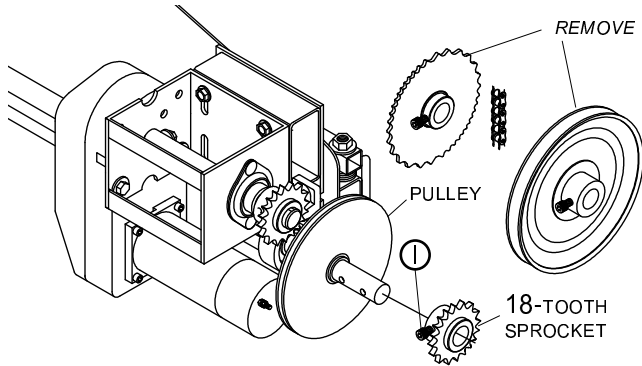
**STEP 6:** Install motor shaft with cap screw **J**, washers **S** and nut **BB**.



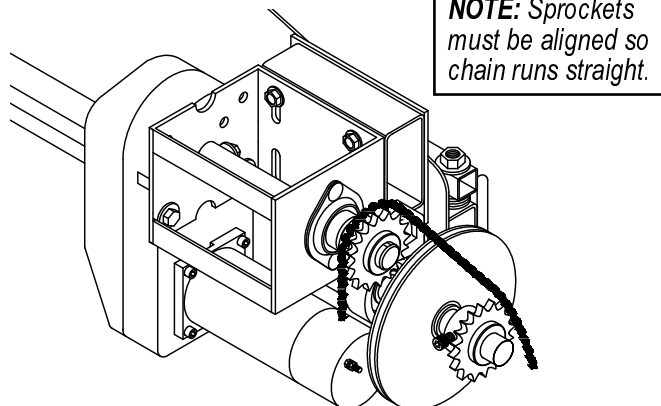
**STEP 7:** Install bearing flanges with screws **I**, nuts **BB** and washers **S**.

**STEP 8:** Slide 18-tooth sprocket over drive shaft. Finger tighten set screws.

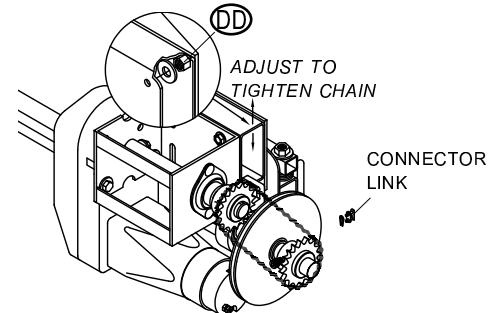
**STEP 9:** Replace existing sprocket or pulley with 18-tooth sprocket. Fasten with screw **I**.



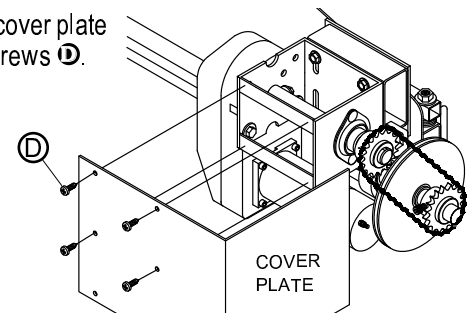
**STEP 10:** Lay chain over sprockets and align sprockets so chain runs straight. Tighten set screw on sprocket against flat on motor shaft.



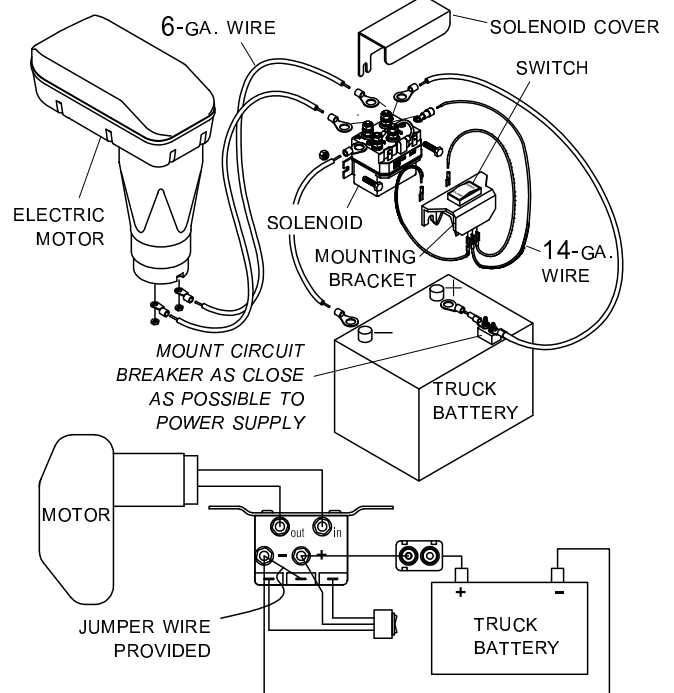
**STEP 11:** Wrap chain around sprockets and install connector link. Pull motor assembly upwards to tighten chain. Align assembly with base plate and remove slack in chain. Tighten nuts **DD**.

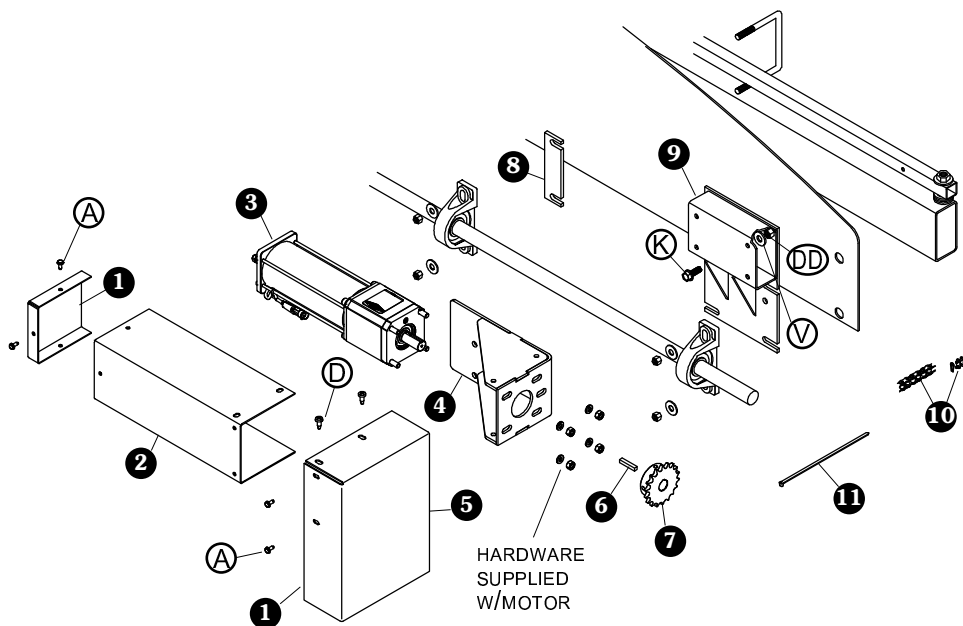


**STEP 12:** Install cover plate with screws **D**.



**STEP 13:** Mount solenoid in suitable location - a ventilated area near battery is ideal. Run 6-ga. wire from motor to solenoid and from power supply to solenoid as shown. Run 14-ga. wire from solenoid to switch and mount switch in area convenient to operator. Mount switch inside or outside cab. Mount with bracket or install directly into dash panels.



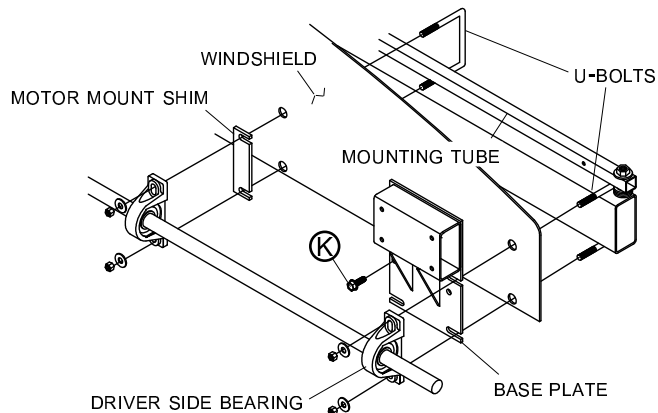


Item	Part #	Description
1.	1122565	Motor Cover Cap - HD
2.	1122564	Motor Cover - HD
3.	1122442	Replacement Motor - HD
4.	1122559	Motor Mount Bracket - HD
5.	1122566	Sprocket Cover - HD
6.	1120762	Square Key
7.	1122377	Sprocket - T18-40 - 3/4" Bore
8.	1109444	Motor Mount Shim
9.	1109449	Motor Mount Base Plate
10.	1122562	Roller Chain Assembly - 23 3/4"
11.	1703231	Cable Tie - 8"
A.	1704308	Flanged Cap Screw - #10 x 1/2"
D.	1700398	Self-Drilling Screw - 1/4" x 3/4"
K.	1700400	Self-Tapping Screw - 3/8" x 1"
V.	1700429	Flat Washer - 3/8"
DD.	1700407	Hex Nut - 3/4"

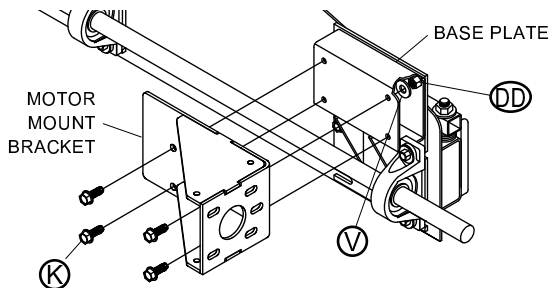
**STEP 1:** Loosen driver side bearing on front drive assembly. Slide base plate behind bearing. Square up mount and retighten bearing.

**STEP 2:** Install screw **A** through hole in base plate.

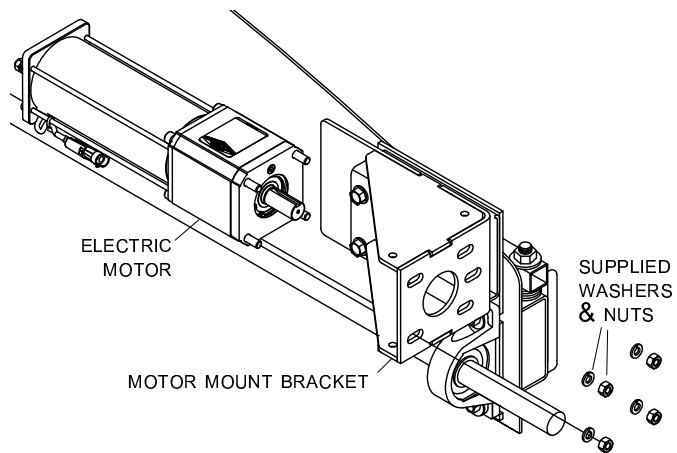
**STEP 3:** Install and secure motor mount shims behind center and passenger side bearings.



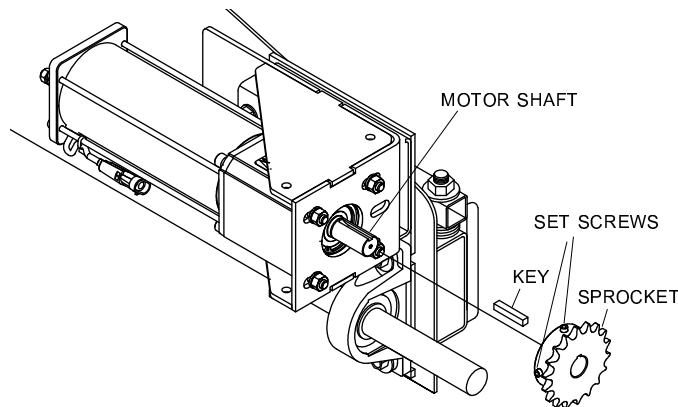
**STEP 4:** Fasten motor mount bracket to base plate with screws **K**, washers **V** and nuts **DD**. Finger tighten.



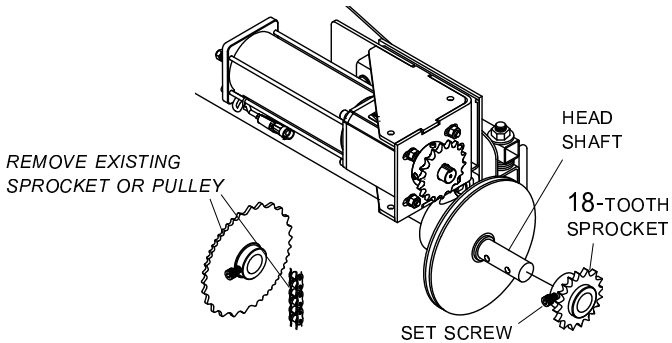
**STEP 5:** Fasten electric motor to motor mount bracket with supplied washers and nuts.



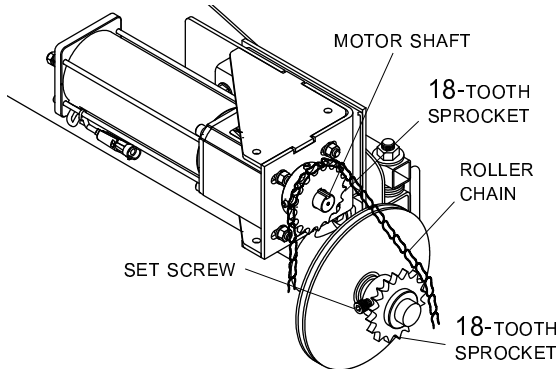
**STEP 6:** Slide 18-tooth sprocket over motor shaft, inserting key in keyway. Do not tighten set screws at this time.



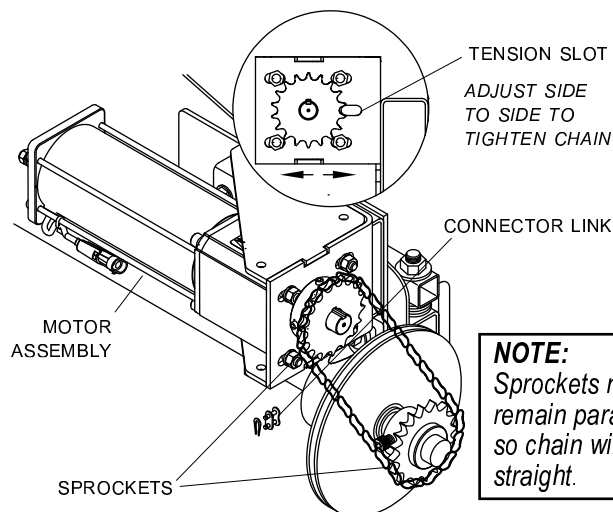
**STEP 7:** Remove existing sprocket or pulley (used in manual operation) from end of head shaft. Replace with 18-tooth sprocket. Tighten set screws on sprocket.



**STEP 8:** Lay roller chain across top of both sprockets. Align sprocket on motor shaft with sprocket on head shaft so chain runs parallel to face of motor bracket. Tighten set screws on sprocket against motor shaft.

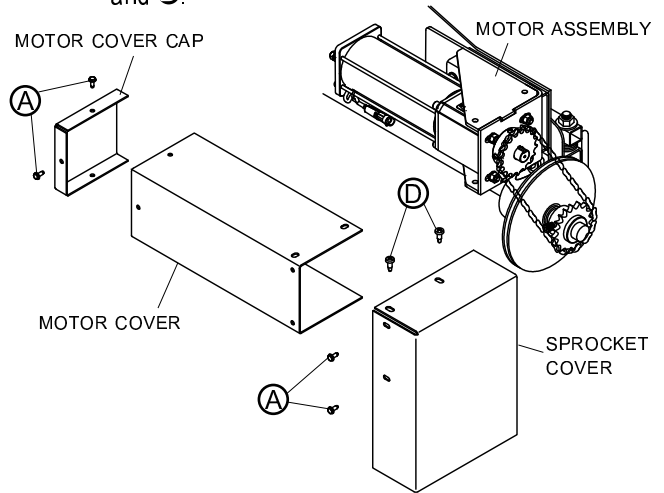


**STEP 9:** Wrap chain around sprockets and connect ends with connector link. Slide motor side to side using tension slot to create tension on chain.



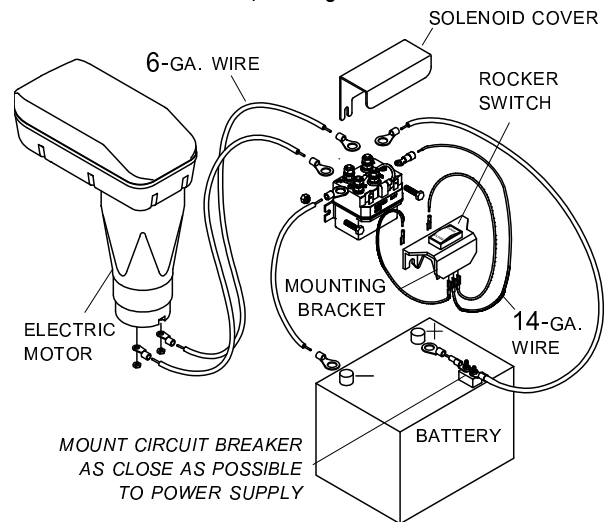
**NOTE:** Sprockets must remain parallel so chain will run straight.

**STEP 10:** Install motor cover, motor cover cap and sprocket cover over motor assembly. Fasten with screws **A** and **D**.

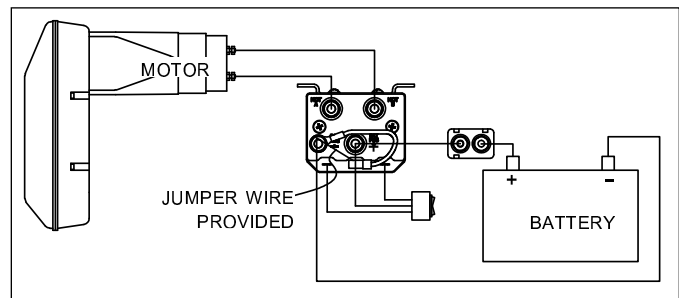


**ELECTRIC MOTOR WIRING**

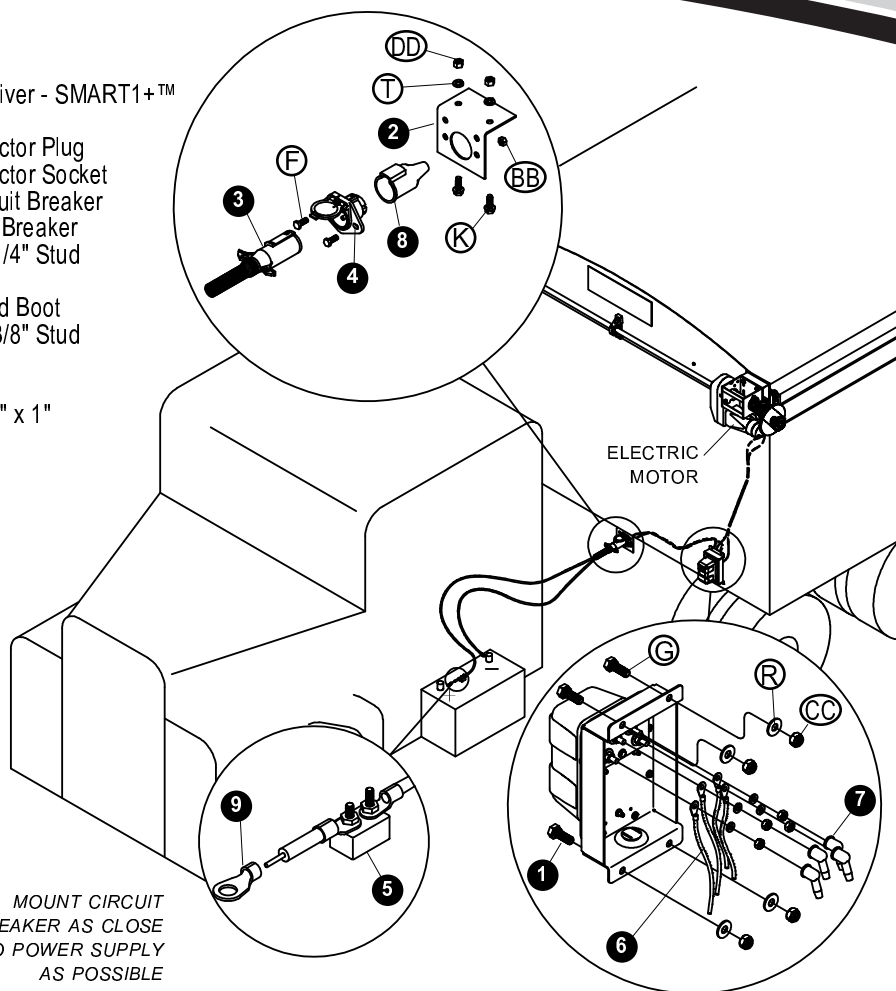
**STEP 11:** Run 6-ga. wire from motor to solenoid and from power supply to solenoid as shown in diagram. Run 14-ga. wires from solenoid to switch. Locate rocker switch in convenient operating location.



**NOTE:** System can only be grounded through switch. Running wires to motor will reverse continuity.



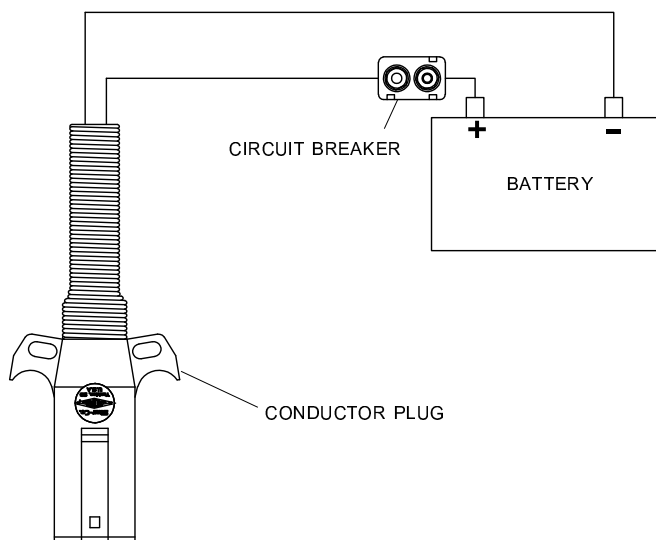
Item	Part #	Description
1.	1123582	Shur-Co® Wireless Receiver - SMART1+™
2.	1109015	Mounting Bracket
3.	1115385	Heavy-Duty Dual-Conductor Plug
4.	1115386	Heavy-Duty Dual-Conductor Socket
5.	1703480	50-Amp Auto-Reset Circuit Breaker
	1704354	40-Amp Modified Circuit Breaker
6.	1702707	Ring Terminal - 6 Ga. x 1/4" Stud
7.	1704330	Rubber Boot
8.	1704573	Conductor Socket Sealed Boot
9.	1703244	Ring Terminal - 6 Ga. x 3/8" Stud
F.	1701045	Cap Screw - 5/16" x 3/4"
G.	1702926	Cap Screw - 5/16" x 7/8"
K.	1700400	Self-Tapping Screw - 3/8" x 1"
R.	1201237	Flat Washer - 5/16"
T.	1700434	Lock Washer - 3/8"
BB.	1700411	Hex Nut - 5/16"
CC.	1700419	Lock Nut - 5/16"
DD.	1700407	Hex Nut - 3/8"



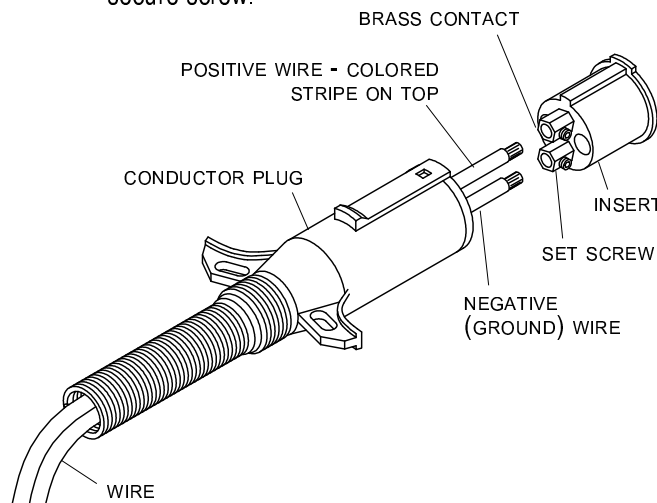
**NOTE:** Cut wires to length and strip only enough wire insulation to install ring terminals. Insert bare wire into ring terminals and crimp securely.

MOUNT CIRCUIT BREAKER AS CLOSE TO POWER SUPPLY AS POSSIBLE

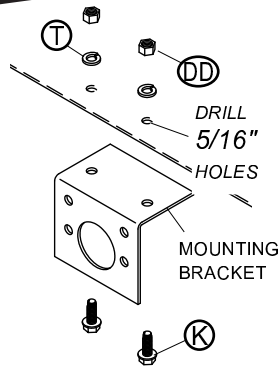
**STEP 1: Circuit breaker and battery.** Mount circuit breaker as close as possible to battery or power supply.



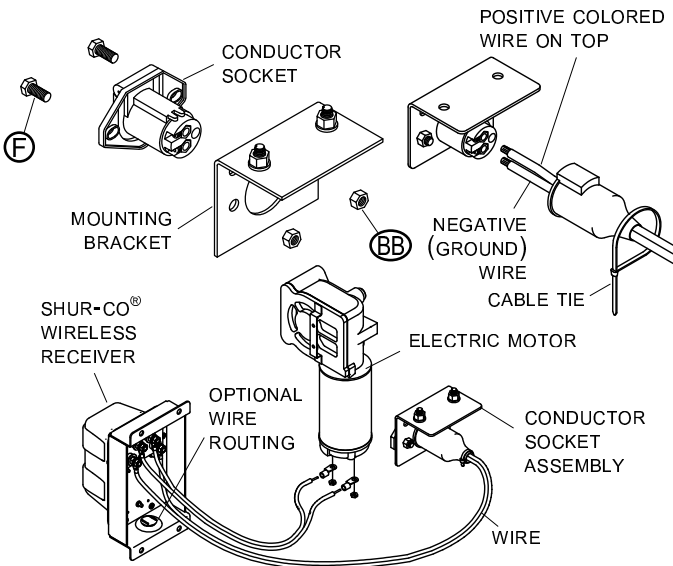
**STEP 2: Conductor plug.** Unfasten and remove insert from conductor plug. Feed 6-ga. wire through plug and into brass contacts on insert. Tighten set screws to secure wires. Replace insert into conductor plug and secure screw.



**STEP 1: Mounting bracket.** Mount bracket at suitable location on front of trailer, usually near existing plugs. Mark and drill 5/16" holes and fasten with 3/8" x 1" self-tapping screws **(K)**, lock washers **(I)** and nuts **(D)**.



**STEP 2: Conductor socket.** Fasten conductor socket into mounting bracket with 5/16" x 3/4" cap screws **(B)** and nuts **(B)**. Bring 6-ga. wire from motor through sealed boot. Connect wire ends to conductor socket, aligning positive wire on socket with positive wire on conductor plug. Slide sealed boot against conductor socket and secure boot to wire with cable tie.



**! WARNING**  
Apply operation warning decal (P/N 1704562) in same location as receiver.

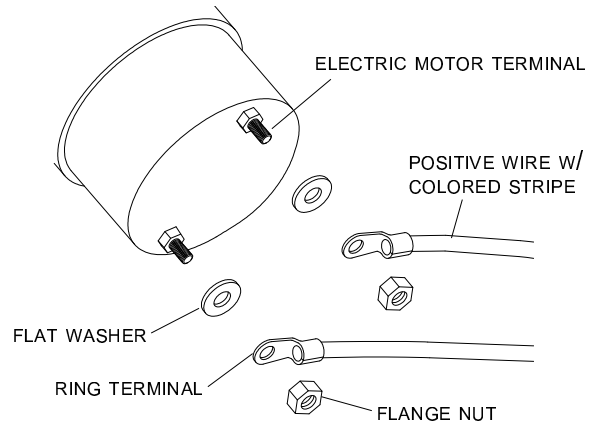
**STEP 3: Shur-Co® wireless receiver.** Run 6-ga. wire from electric motor to receiver. Route wire as desired. Insert end of this wire through rubber boots, then crimp 1/4" ring terminals onto wire ends. Remove nuts and lock washers from back of wireless receiver. Place positive wire on upper orange post and negative wire on upper black post. Secure lock washers and hex nuts. Coat with dielectric grease and install rubber boots over ring terminals.

**NOTE:** Use dielectric grease (P/N 1704378) to prevent corrosion on terminals.

Run 6-ga. wire from receiver to conductor socket through rubber boots. Crimp 1/4" ring terminals to wire ends. On back of wireless receiver, place positive wire on lower orange post and negative wire on lower black post. Secure with 1/4" lock washers and hex nuts. Coat with dielectric grease and install rubber boots over ring terminals. When wiring socket, align positive wire with positive wire on plug.

Mount wireless receiver at suitable location on front of trailer. Mark and drill 11/32" holes and fasten with screws **(G)**, flat washers **(J)** and lock nuts **(C)**.

**STEP 4:** Connect wires to motor.



**! CAUTION**  
Check all hardware for complete assembly before operating. Inspect system at this time and adjust as required.

**OPERATION:**

**A)** Check motor direction by activating switch to "OPEN." If switch is running system backwards, change wire leads on motor to opposite connections.

**B) Close tarp:** Push switch to "CLOSE" and hold. Observe tarp and release switch when tarp is fully closed.

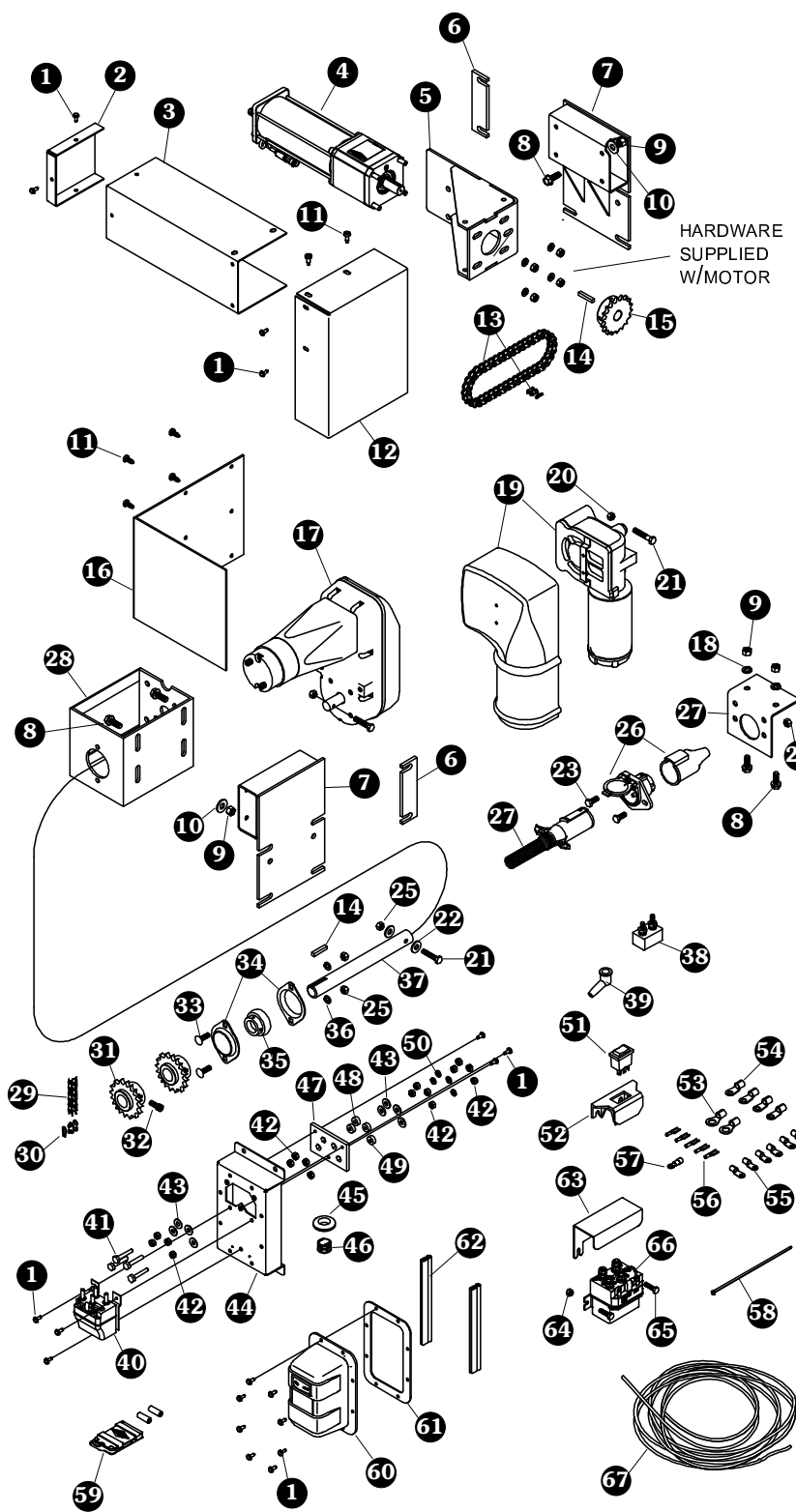
**C) Open tarp:** Push switch to "OPEN" and hold. Observe tarp and release switch when tarp is fully open.

**D) Remote operation:** Refer to remote instruction manual.

**NOTE:** Release switch at end of cycle or modified-reset circuit breaker will trip. After breaker resets, switch will activate motor again. To reduce unnecessary strain on tarp components, release switch at end of each cycle.

**NOTE:** Receiver may be pressure washed, but keep nozzle at least 3' from system while spraying.



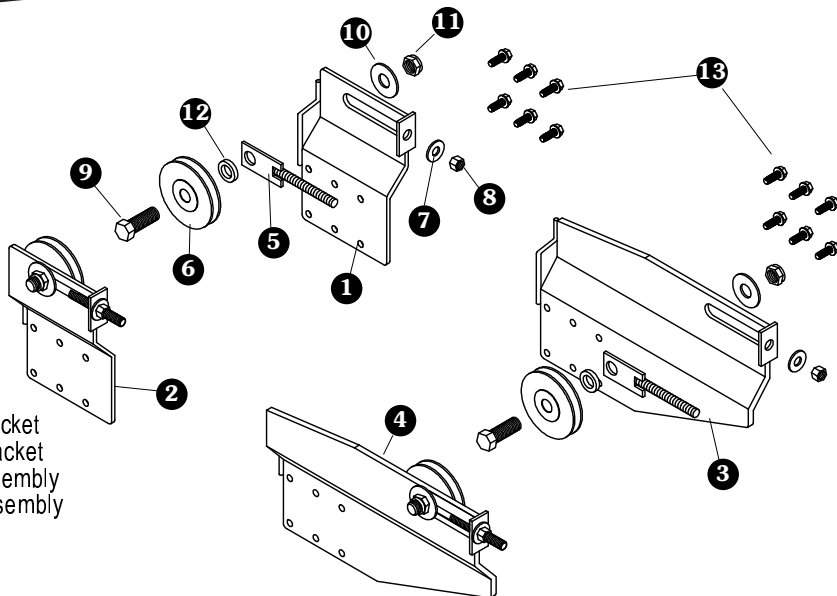


**ELECTRIC COMPONENTS**

Item	Part #	Description
1.	1704308	Flanged Cap Screw - #10 x 1/2"
2.	1122565	Motor Cover Cap - HD
3.	1122564	Motor Cover - HD
4.	1122442	Motor - Shur-Trak II™ HD
5.	1122559	Motor Mount Bracket - HD
6.	1109444	Motor Mount Shim
7.	1109449	Motor Mount Base Plate
8.	1700400	Self-Tapping Screw - 3/8" x 1"
9.	1700407	Hex Nut - 3/8"
10.	1700429	Flat Washer - 3/8"
11.	1700398	Self-Drilling Screw - 1/4" x 3/4"
12.	1122566	Sprocket Cover - HD
13.	1122562	Roller Chain Assembly - 23 3/4"
14.	1120762	Square Key
15.	1122377	Sprocket - T18-40 - 3/4" Bore
16.	1109443	Motor Mount Cover Plate
17.	1701498	Super Duty Electric Motor
18.	1700434	Lock Washer - 3/8"
19.	1121307	Durabuilt Motor w/Cover - 2 1/8" Shank
20.	1702492	Top Lock Nut - 5/16"
21.	1701468	Cap Screw - 5/16" x 1 3/4"
22.	1700428	Flat Washer - 5/16"
23.	1701045	Cap Screw - 5/16" x 3/4"
24.	1109015	Mounting Bracket
25.	1700411	Hex Nut - 5/16"
26.	1119557	Heavy-Duty Dual-Conductor Socket w/Boot
27.	1115385	Heavy-Duty Dual-Conductor Plug
28.	1109452	Motor Mount
29.	1109456	Roller Chain Assembly
30.	1701057	Connector Link
31.	1106619	Sprocket - 18 Tooth
32.	1701493	Socket Hd. Cap Screw - 5/16" x 1 1/2"
33.	1701522	Carriage Bolt - 5/16" x 1"
34.	1701054	Bearing Flange
35.	1705450	Ball Bearing - 1"
36.	1700433	Lock Washer - 5/16"
37.	1109445	Motor Mount Shaft
38.	1703480	50-Amp Auto-Reset Circuit Breaker
	1704354	40-Amp Modified-Reset Circuit Breaker
39.	1704330	Rubber Boot
40.	1704312	Motor-Reversing Solenoid - 3 Pt. Mt.
41.	1704343	Cap Screw - 1/4" x 1 1/2"
42.	1700408	Hex Nut - 1/4"
43.	1700427	Flat Washer - 1/4"
44.	1118296	Modular Control Bracket
45.	1703282	Rubber Grommet - 1 1/4"
46.	1701595	End Plug - 1"
47.	1118297	Insulating Plate
48.	1118037	Plastic Washer - Black
49.	1118250	Plastic Washer - Orange
50.	1700436	Lock Washer - 1/4"
51.	1116020	Rocker Switch
52.	1703661	Rocker Switch Mounting Bracket
53.	1703245	Ring Terminal - 6 Ga. x #10 Stud
54.	1703244	Ring Terminal - 6 Ga. x 3/8" Stud
55.	1702707	Ring Terminal - 6 Ga. x 1/4" Stud
56.	1703659	Ring Terminal - 14 Ga. x 1/4" Stud
57.	1704153	Ring Terminal - 14 Ga. x 1/4"
58.	1703231	Cable Tie - 8"
59.	1123161	5-Channel SMART1+™ Remote
60.	1123604	Solenoid Cover w/Gasket - SMART1+™
61.	1704309	Gasket - Solenoid Cover
62.	1704369	Trim Seal (per foot)
63.	1703895	Solenoid Cover
64.	1701543	Nylon Lock Nut - 1/4"
65.	1700381	Cap Screw - 1/4" x 1"
66.	1703845	Motor-Reversing Solenoid
67.	1703822	Dual-Conductor Wire - 6-Ga. 259 Strand

**REAR PULLEY ASSEMBLIES**

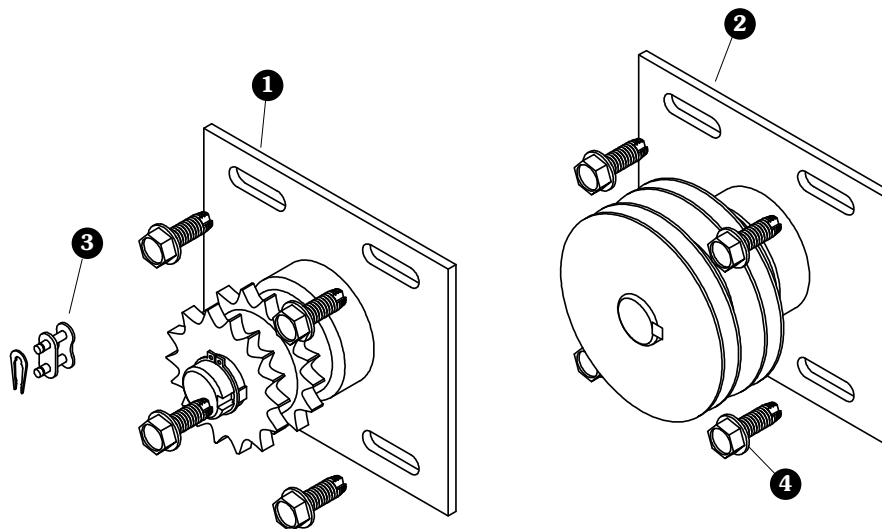
Item	Part #	Description
1.	1109013	Pass. Side Rear Pulley Bracket
	1109014	Driver Side Rear Pulley Bracket
2.	1109198	Pass. Side Rear Pulley Assembly
	1109067	Driver Side Rear Pulley Assembly
3.	1109065	Pass. Side Rear Pulley Extended Bracket
	1109069	Driver Side Rear Pulley Extended Bracket
4.	1109200	Pass. Side Extended Rear Pulley Assembly
	1109068	Driver Side Extended Rear Pulley Assembly
5.	1109012	Rear Pulley Take-Up
6.	1702099	Pulley - 4"
7.	1701269	Flat Washer - 1/2"
8.	1702115	Nylon Lock Nut - 1/2"
9.	1701581	Cap Screw - 3/4" x 2"
10.	1701039	Flat Washer - 3/4"
11.	1702123	Nylon Lock Nut - 3/4"
12.	1702468	Spacer Washer
13.	1700400	Self-Tapping Screw - 3/8" x 1"



**DOUBLE IDLERS**

Item	Part #	Description
1	1110072	Double Idler w/Chain Kit
*2	1110073	Double Idler w/Belt Kit
3	1701057	Connector Link
4	1700400	Self-Tapping Screw - 3/8" x 1"

\* Belt not included

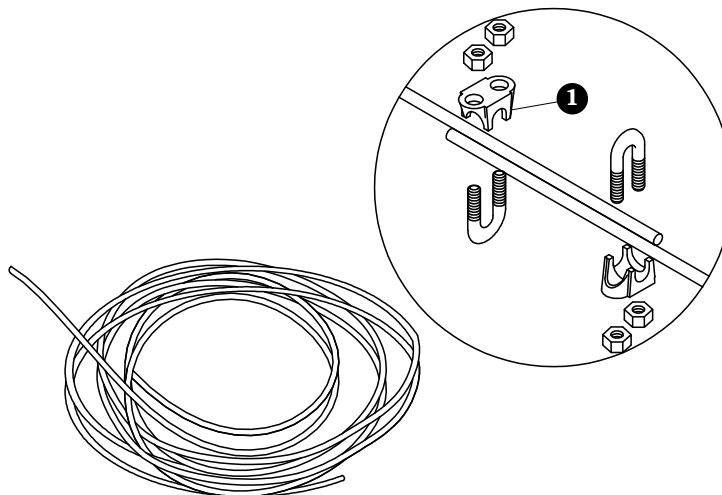


**CABLE ASSEMBLIES**

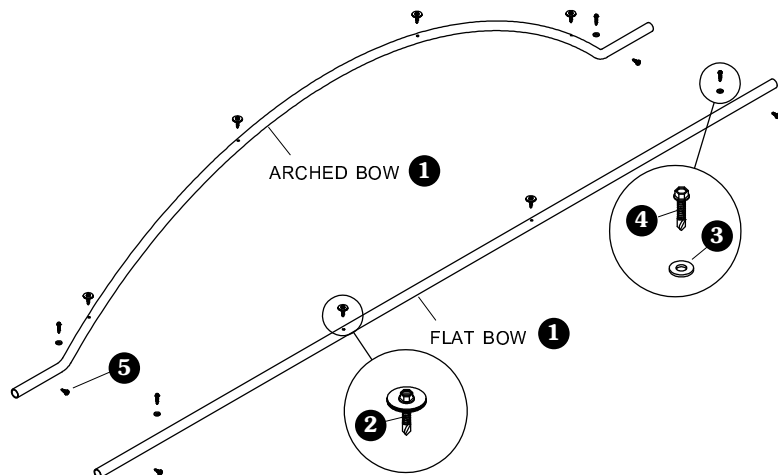
Item	Part #	Description
1.	1701441	Cable Clip - 1/4"

**Cable Length (two cables per kit)**

Cable Length	Bow Qty.	Cable Length	Bow Qty.
30 ft.	4	66 ft.	10
36 ft.	5	72 ft.	11
42 ft.	6	78 ft.	12
48 ft.	7	84 ft.	13
54 ft.	8	90 ft.	14
60 ft.	9	96 ft.	15



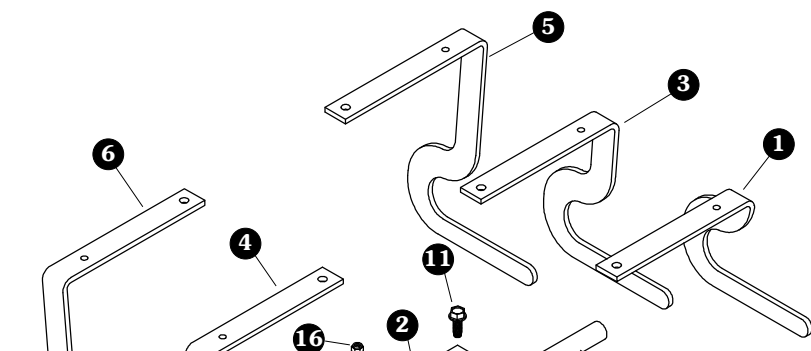




**BOWS**

Item	Part #	Description
*1.	1116086	6" Rise Bow Kit - 92" Series
	1116087	12" Rise Bow Kit - 92" Series
	1116088	18" Rise Bow Kit - 92" Series
	1116089	Flat Bow Kit - 92" Series
	1116090	6" Rise Bow Kit - 96" Series
	1116091	12" Rise Bow Kit - 96" Series
	1116092	18" Rise Bow Kit - 96" Series
	1116093	Flat Bow Kit - 96" Series
	1116094	6" Rise Bow Kit - 102" Series
	1116095	12" Rise Bow Kit - 102" Series
	1116096	18" Rise Bow Kit - 102" Series
	1116097	Flat Bow Kit - 102" Series
2.	1701520	Screw w/Rubber Washer - #12
3.	1700427	Flat Washer - 1/4"
4.	1701471	Self-Drilling Screw - #12 x 1"
5.	1700398	Self-Drilling Screw - 1/4" x 3/4"

\*Hardware sold separately



**BOW SHANKS & WINDGUARDS**

Item	Part #	Description
1.	1115467	Pass. Side Windguard - 4"
2.	1115468	Driver Side Windguard - 4"
3.	1115469	Pass. Side Windguard - 6"
4.	1115470	Driver Side Windguard - 6"
5.	1115471	Pass. Side Windguard - 8"
6.	1115472	Driver Side Windguard - 8"
7.	1115490	Bow Reinforcement Tube
8.	1109393	Windguard Anchor Washer
9.	1115466	Windguard Anchor
10.	1115492	Windguard Catch Tube
11.	1700400	Self-Tapping Screw - 3/8" x 1"
12.	1114019	Twist-Lok™ Bow Shank
13.	1700437	Lock Washer - 1/2"
14.	1700398	Self-Drilling Screw - 1/4" x 3/4"
15.	1703430	Pan Hd. Cap Screw - 1/4" x 2 1/4"
16.	1701543	Nylon Lock Nut - 1/4"
17.	1702113	Cap Screw - 1/2" x 5"
18.	1701441	Cable Clip - 1/4"
19.	1115475	High-Lift Bow Shank
20.	1115476	High-Lift Fixed Bow Shank
21.	1115491	Bow Shank Reinforcement
22.	1700427	Flat Washer - 1/4"
23.	1701471	Self-Drilling Screw - #12 x 1"
24.	1108080	Bridge Plate
25.	1109151	Bow Stop

**WINDSHIELDS**

Item	Part #	Description
1.	1110150	Windshield - 92"
	1110151	Windshield - 96"
	1110152	Windshield - 102"
2.	1700398	Self-Drilling Screw - 1/4" x 3/4"

**FRONT DRIVE ASSEMBLIES**

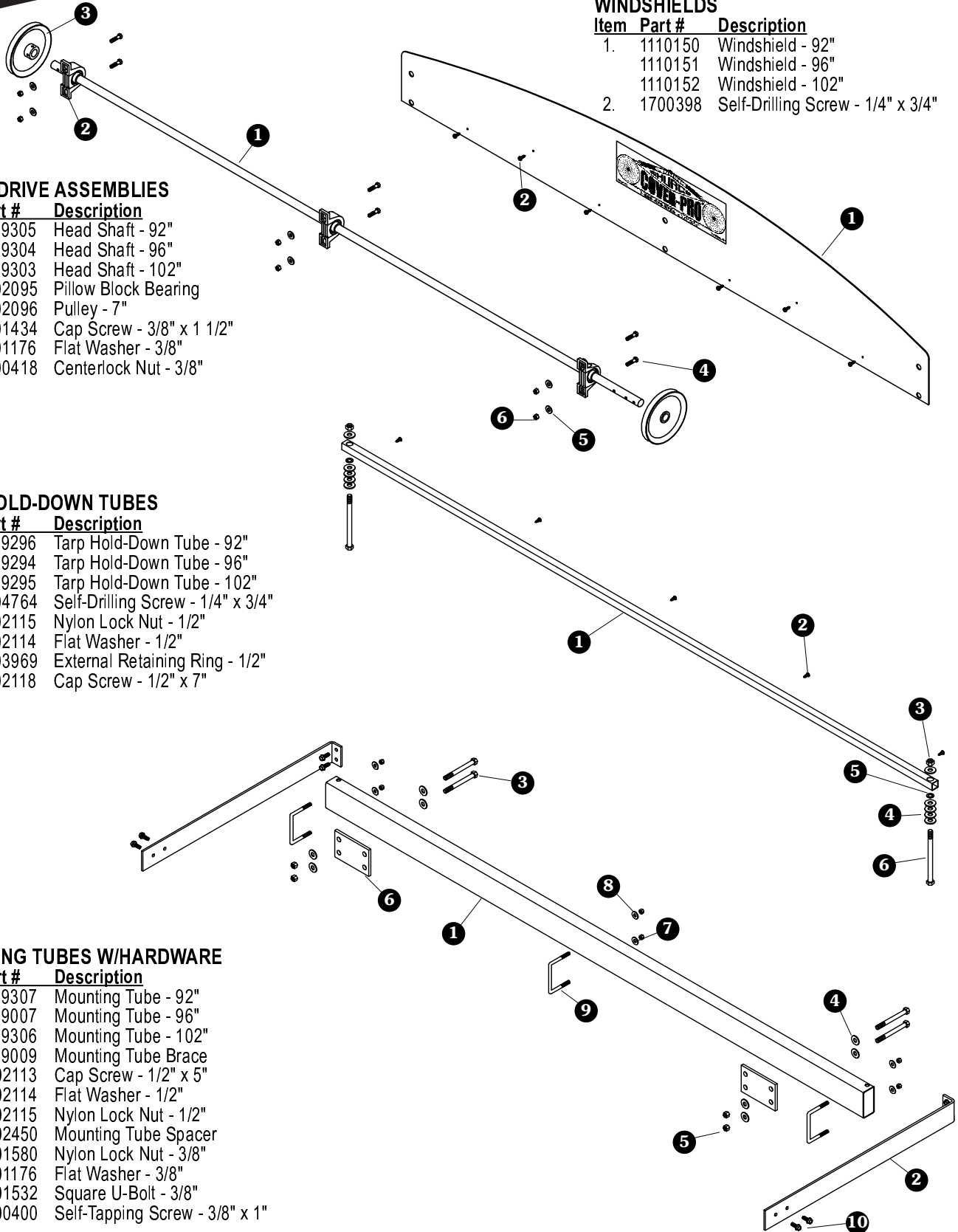
Item	Part #	Description
1.	1109305	Head Shaft - 92"
	1109304	Head Shaft - 96"
	1109303	Head Shaft - 102"
2.	1702095	Pillow Block Bearing
3.	1702096	Pulley - 7"
4.	1701434	Cap Screw - 3/8" x 1 1/2"
5.	1701176	Flat Washer - 3/8"
6.	1700418	Centerlock Nut - 3/8"

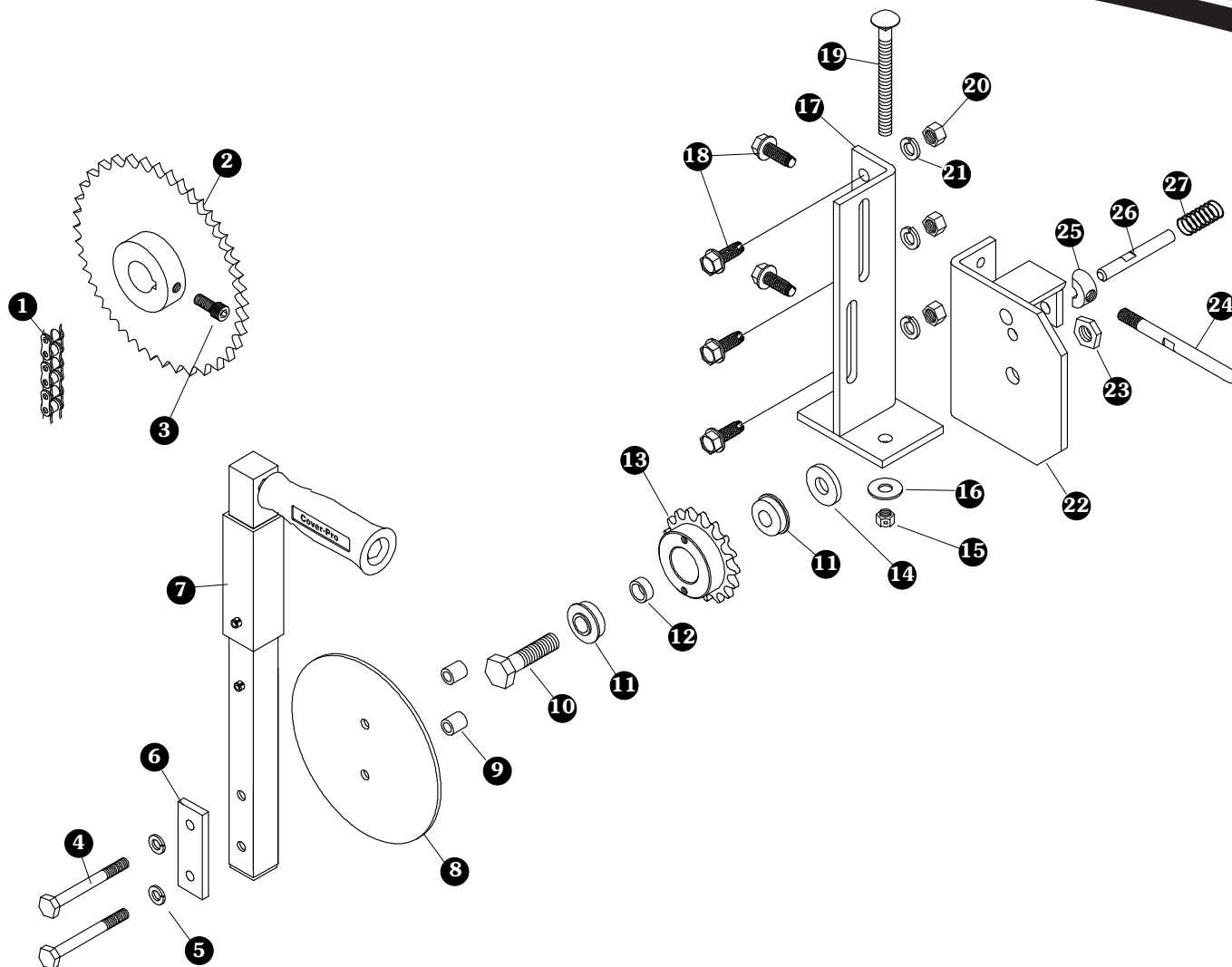
**TARP HOLD-DOWN TUBES**

Item	Part #	Description
1.	1109296	Tarp Hold-Down Tube - 92"
	1109294	Tarp Hold-Down Tube - 96"
	1109295	Tarp Hold-Down Tube - 102"
2.	1704764	Self-Drilling Screw - 1/4" x 3/4"
3.	1702115	Nylon Lock Nut - 1/2"
4.	1702114	Flat Washer - 1/2"
5.	1703969	External Retaining Ring - 1/2"
6.	1702118	Cap Screw - 1/2" x 7"

**MOUNTING TUBES W/HARDWARE**

Item	Part #	Description
1.	1109307	Mounting Tube - 92"
	1109007	Mounting Tube - 96"
	1109306	Mounting Tube - 102"
2.	1109009	Mounting Tube Brace
3.	1702113	Cap Screw - 1/2" x 5"
4.	1702114	Flat Washer - 1/2"
5.	1702115	Nylon Lock Nut - 1/2"
6.	1702450	Mounting Tube Spacer
7.	1701580	Nylon Lock Nut - 3/8"
8.	1701176	Flat Washer - 3/8"
9.	1701532	Square U-Bolt - 3/8"
10.	1700400	Self-Tapping Screw - 3/8" x 1"





**MANUAL CRANKS**

Item	Part #	Description
1.	1109179	Roller Chain/Link - 14'
2.	1702098	Sprocket - 42 Tooth
3.	1701493	Socket Hd. Cap Screw - 5/16" x 1 1/2"
4.	1702629	Cap Screw - 5/16" x 3"
5.	1700433	Lock Washer - 5/16"
6.	1108909	Handle Stiffener
7.	1108929	Manual Crank Handle
8.	1110159	Guard
9.	1108917	Guard Spacer
10.	1701042	Cap Screw - 1/2" x 2"
11.	1702627	Flange Bearing
12.	1110648	Sprocket Spacer
13.	1110640	Sprocket - #40
14.	1701269	Flat Washer - 1/2"

Item	Part #	Description
15.	1700418	Centerlock Nut - 3/8"
16.	1700429	Flat Washer - 3/8"
17.	1108924	Manual Crank Mounting Bracket
18.	1700400	Self-Tapping Screw - 3/8 x 1"
19.	1702080	Carriage Bolt - 3/8" x 4"
20.	1700407	Hex Nut - 3/8"
21.	1700434	Lock Washer - 3/8"
22.	1108925	Manual Crank Adjustment Bracket
23.	1701145	Nylon Lock Nut - 1/2"
24.	1108918	Manual Crank Locking Pin
25.	1108921	Manual Crank Cam Lobe
26.	1108919	Locking Pin - 3/8"
27.	1702084	Compression Spring

# MORE QUALITY PRODUCTS FROM SHUR-CO®

---

- **Genuine Replacement Tarps**
- **Genuine Replacement Parts**
  
- **Agriculture Products**
  - Value Series Shur-Lok®
  - Super Duty Shur-Lok®
  - Shur-Lok® Junior
  - Premium Belt 'n Ratchet
  - Cable-Lok™
  - Turning Point™ Bow
  
- **SMARTrailer™ Accessories for Agriculture Products**
  - SMART2™ Remote
  - SMART1 +™ Remote
  - 4500 Series HD Electric
  - Electric Shur-Lok®
  - AutoTrap™ Hopper Opener
  - ProTrap® Hopper Opener
  - Electric Gate & Hoist
  - LiteALL™ Work Lights
  - Cable-Lok™ Electric Upgrade
  - Electric Turning Point™ Bow
  - Solar Power Pack
  
- **Flatbed Products**
  - ShurTite™ Retractable Tarps
  - Stock Lumber & Steel Tarps
  
- **Custom Products**
  - Fitted Truck Covers
  - Flat Utility Tarps
  - Bean Drill Covers
  - Shur-Lok® Tarp Cords
  - Gustbuster™ Tarp Cords
  
- **Construction Products**
  - Super Duty Shur-Lok®
  - Shur-Trak II™
  - Cover-Pro II®
  - Turning Point™ Bow
  - IronSide™ Side-Dump System
  - Arm-Matic™
  - DuraPull™
  - Econo-Pull™
  - Turbo Tarp2™
  - 2000 Series
  - 5000 Series
  - Hammer™
  - Bullet™
  - Flash™
  - Long Arm™
  
- **SMARTrailer™ Accessories for Construction Products**
  - 4500 Series HD Electric w/Gate Flex™
  - Shur-Trak II™ Electric Upgrade
  - Cover-Pro II® Electric Upgrade
  - Electric Turning Point™ Bow
  - Solar Power Pack
  
- **Waste Products**
  - The Ox™
  - Quick-Flip III™
  - Sidewinder™
  - Sidewinder™ 350
  - HyTower™ SL
  - HyTower™ DL
  - Double-Flip™

TARPING SYSTEMS & ACCESSORIES

